

Annual Report Fiscal Year 2012–2013



Hawai'i Police Department

*Serving
and
Protecting
with
Aloha*



**Hawai'i Police Department
County of Hawai'i**

Contents

Mission Statement/Vision Statement/Core Values	2
Letter from the Police Chief.....	3
Letter from the Police Commission Chair.....	4
Hawai'i County Police Commission	5
Special Response Team (SRT)	6
Community Policing.....	7
Organization Chart.....	10
Photos of Police Administration	11
Office of Professional Standards/Criminal Intelligence Unit	12
Administrative Bureau.....	14
Operations Bureaus	18
Criminal Investigations Divisions.....	19
Area I Patrol Districts	30
Area II Patrol Districts	34
Traffic Enforcement Unit.....	38
Grants	39
Budget	42
Personnel Changes.....	43
Statistical Tables & Charts.....	44

Mission Statement

The employees of the Hawai'i Police Department are committed to preserving the Spirit of Aloha. We will work cooperatively with the community to enforce the laws, preserve peace, and provide a safe environment.

Vision Statement

The Hawai'i Police Department is committed to providing the highest quality of police service and forming partnerships with the community to achieve public satisfaction making the Big Island a safe place to live, visit, and conduct business.

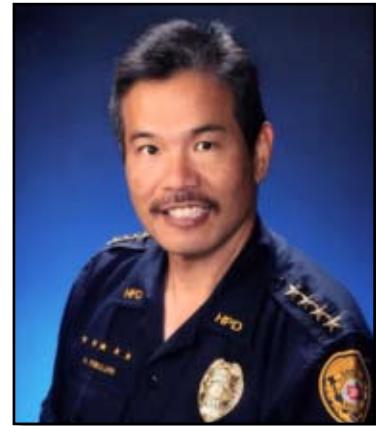
Core Values

- ▶ Integrity
- ▶ Professionalism
- ▶ Compassion
- ▶ Teamwork
- ▶ Community Satisfaction

Police Department County of Hawai'i

2012–2013 Annual Report

Hawai'i County Police Commission
County of Hawai'i
Aupuni Center
101 Pauahi Street, Suite 9
Hilo, Hawai'i 96720



Harry S. Kubojiri
Police Chief
Hawai'i Police Department

Dear Commissioners:

I am pleased to submit the Hawai'i Police Department's Annual Report for Fiscal Year 2012–2013. It is with particular pride that I am able to report that in Fiscal Year 2012–2013 we gained accreditation from the Commission on Accreditation for Law Enforcement Agencies, Inc.® We have met the 421 standards required and are now part of the elite group of law enforcement agencies accredited by CALEA. This makes us more accountable to the public we serve and underscores our commitment to upholding our high standards.

This was a challenging year, as police responded to 10 murders and five attempted murders. Thanks to the hard work by our Criminal Investigations Section, 80 percent of those cases had been solved by the end of the fiscal year. In addition, a large spike in burglaries in West Hawai'i ended once police were able to identify and arrest the persons responsible. As is often the case, the assistance of the community was invaluable.

A challenge for civilian staff in the Records Section was keeping up with the huge increase in the number of firearm registrations. Registrations nearly doubled from last year's numbers.

We continue to hold community meetings at rotating locations throughout the eight police districts on the Big Island. The purpose of the meetings is to allow the public to become acquainted with the Police Department's command staff and to discuss concerns with the commanders who oversee police operations in each district. Community input from the meetings and from our on-line Community Satisfaction Survey has helped us improve operations.

I am honored to oversee the men and women of the Hawai'i Police Department as we continue to develop partnerships with the community so we can work together to keep you safe.

Sincerely,

HARRY S. KUBOJIRI
POLICE CHIEF
HAWAI'I POLICE DEPARTMENT

Hawai'i County Police Commission

The Honorable William P. Kenoi
Mayor, County of Hawai'i
25 Aupuni Street
Hilo, Hawai'i 96720



Leroy J. Victorine, Chair
Hawai'i County
Police Commission

Dear Mayor Kenoi:

In Fiscal Year 2012–13, the Hawai'i County Police Commission held ten monthly meetings at sites in Hilo, Kona and Waimea.

We had the privilege of attending various community functions, such as monthly police commander's meetings, recruit graduations and police week ceremonies. We attended the State of Hawai'i Police Commissioners Conference, where we discussed common interests and concerns of civilian oversight in the State of Hawai'i. We also attended the Hawai'i State Law Enforcement Association Conference where we learned of current threats and trends in law enforcement.

We are committed to our duties of civilian oversight and service to the Police Department and people of Hawai'i County. It has been an honor to serve as Police Commissioners.

Sincerely,

LEROY J. VICTORINE

CHAIR

HAWAII COUNTY POLICE COMMISSION

Hawai'i County Police Commission

Police Commissioners Paul W. Horner, T. Ka'ili Pe'a-Ferrari, Guy K. Schutte, Kenneth T. Ono, Jessanie L. Marques, Michelle L. Kualii and Leroy J. Victorine

Not pictured: Donn Mende and Carol Ignacio.



Nine Big Island residents proudly serve on the Hawai'i County Police Commission. The mayor appoints one member from each district and each appointment is subject to confirmation by the Hawai'i County Council.

The commission's most important responsibilities, as delineated in the Hawai'i County Charter, are to appoint and remove the police chief at its sole discretion, confirm the chief's appointment of a deputy chief, and consider public complaints against the department or any of its members and then submit findings to the chief.

According to the County Charter, the commission's other functions are to:

- ▶ Adopt rules it may consider necessary for the conduct of its business and regulation of the matters committed to its charge, and review the rules and regulations of the department

- ▶ Review the department's annual budget prepared by the police chief and make recommendations thereon to the managing director and mayor

- ▶ Submit an annual report to the mayor

and the County Council

- ▶ Advise the police chief on police-community relations

- ▶ Hire personnel necessary to carry out its functions

- ▶ Evaluate at least annually the performance of the police chief and submit a report to the mayor, managing director and County Council

During Fiscal Year 2012–2013, the Police Commission members were:

- ▶ Council District 1 — Carol R. Ignacio

- ▶ Council District 2 — Leroy J. Victorine

- ▶ Council District 3 — Donn S. Mende

- ▶ Council District 4 — Michelle Kualii

- ▶ Council District 5 — Ka'ili Pe'a-Ferrari

- ▶ Council District 6 — Jessanie Marques

- ▶ Council District 7 — Kenneth T. Ono

- ▶ Council District 8 — Paul W. Horner

- ▶ Council District 9 — Guy Schutte

Special Response Team (SRT)



Lieutenant Thomas Shopay, Special Response Team commander, sits in the driver's seat as Sergeant Calvin Delaries pops his head out of the hatch of one of SRT's specialized vehicles.

The mission of the Special Response Team is to support the Hawai'i Police Department and any other requesting law enforcement agency with a response to critical incidents, such as hostage situations, barricade situations, sniper situations, high-risk warrant service and special assignments. The team also provides security for visiting dignitaries.

The Special Response Team consists of specially selected officers who train extensively throughout the year to ensure operational readiness. SRT includes a crisis negotiation team that receives special training to develop communication skills that are necessary for defusing volatile situations.

SRT's incident commander, tactical team, crisis negotiation team and support personnel conduct scenario training multiple times a year at different locations

throughout Hawai'i Island to ensure operational readiness.

From July 2012 through June 2013, the Special Response Team responded to two barricaded situations, one hostage incident, served one high-risk warrant and participated in eleven special assignments. The special assignments included seven security details, one specialized equipment assist, one search/track, one negotiation assist and one district assist.

The Special Response Team is also tasked with managing the department's conducted electrical weapon program, firearms instructor program and patrol rifle program. SRT also provides training to recruit officers in basic tactics and active shooter response along with participating in community outreach programs.

From its inception through June 2013, SRT responded to 129 incidents.

Community Policing

Commanders: Area I, Lt. John Briski/ Area II, Sgt. Floyd Cody Richards

The people of Hawai‘i County continue to embrace the Community Policing philosophy. Its strategy is to prevent crime, reduce the fear of crime, arrest those who commit crimes and provide a safe environment through the use of a proactive problem-solving approach and established partnerships.

At the end of Fiscal Year 2012–2013, the Community Policing Unit had 38 authorized positions island wide, including a supervising sergeant in Area II and a lieutenant in Area I. Of those, 27 positions were allocated for community police officers, six for school resource officers, two for HI-PAL officers and one for a civilian.

During the fiscal year, the department’s community police officers, school resource officers and HI-PAL staff continued to pursue partnerships with community groups in a collaborative effort to address substance abuse, homelessness, mental health issues, crime, homeland security, lack of youth activities and numerous other issues.

Community police officers regularly attend Neighborhood Watch and community and business association meetings to provide crime prevention presentations, assist with neighbor conflict resolution, assist in the planning of community events and actively partner with other agencies to assist community members

beyond law enforcement.

Area I and Area II Community Policing units have effectively used the bicycle patrol presence to address street-level crime, including reoccurring problems, public complaints, special events and property crimes. Officers on Bicycle Patrol in both Area I and Area II address liquor enforcement, drug enforcement, traffic enforcement, parking problems, public nuisances, pedestrian safety and safety of our visitors — especially on days when cruise ships arrive. Bicycles give the officers the advantage of speed, stealth and the ability to conduct surveillance. Bicycle Patrol reinforces the department’s vision statement of providing a safe place to live, visit and conduct business.

Our school resource officers are stationed at six intermediate schools throughout the island and also reach out to students at many feeder schools. The school is considered a community within a community, and with law enforcement present, it becomes a more complete community. The school resource officers wear three hats: law enforcement officer, teacher and counselor. They investigate crimes on campus, teach classes to students, provide presentations when requested and act as liaisons between the schools and the Police Department. These officers continue to provide DARE classes and

law-related training, assist with school and after school activities, counsel and mentor students daily and participate in

- ▶ Merrie Monarch Festival
- ▶ Downtown Hilo Ho'olaulea
- ▶ July 4th festivities
- ▶ Keiki ID projects
- ▶ Graffiti paint-over and beautification projects
- ▶ Sign-waving projects that raise community awareness about domestic violence, child/vehicle safety, traffic safety and drug abuse
- ▶ Child safety seat check-ups
- ▶ Downtown Hilo Neighborhood Watch Aloha Patrol
- ▶ Kokua Pāhoa meetings and activities
- ▶ VASH meetings and activities
- ▶ Bicycle Patrol in Pāhoa, Downtown Hilo, Keaukaha, Kailua Village and at special events

school intramural activities.

Other notable Community Policing/ HI-PAL activities include:

- ▶ Kurtistown Family Fun Day
- ▶ Mountain View Family Fun Day
- ▶ Kea'au Family Fun Day
- ▶ Halloween safety presentations for parents and children island-wide
- ▶ Aloha Patrol on Ali'i Drive
- ▶ Beach Sweeps on Ali'i Drive and at county beach parks
- ▶ Business Watch for Kailua-Kona
- ▶ Abandoned vehicle beautification projects
- ▶ Community and business association meetings
- ▶ Illegal hunting education project
- ▶ Laupāhoehoe Music Festival
- ▶ Mentoring students daily and participating in school intramural activities.

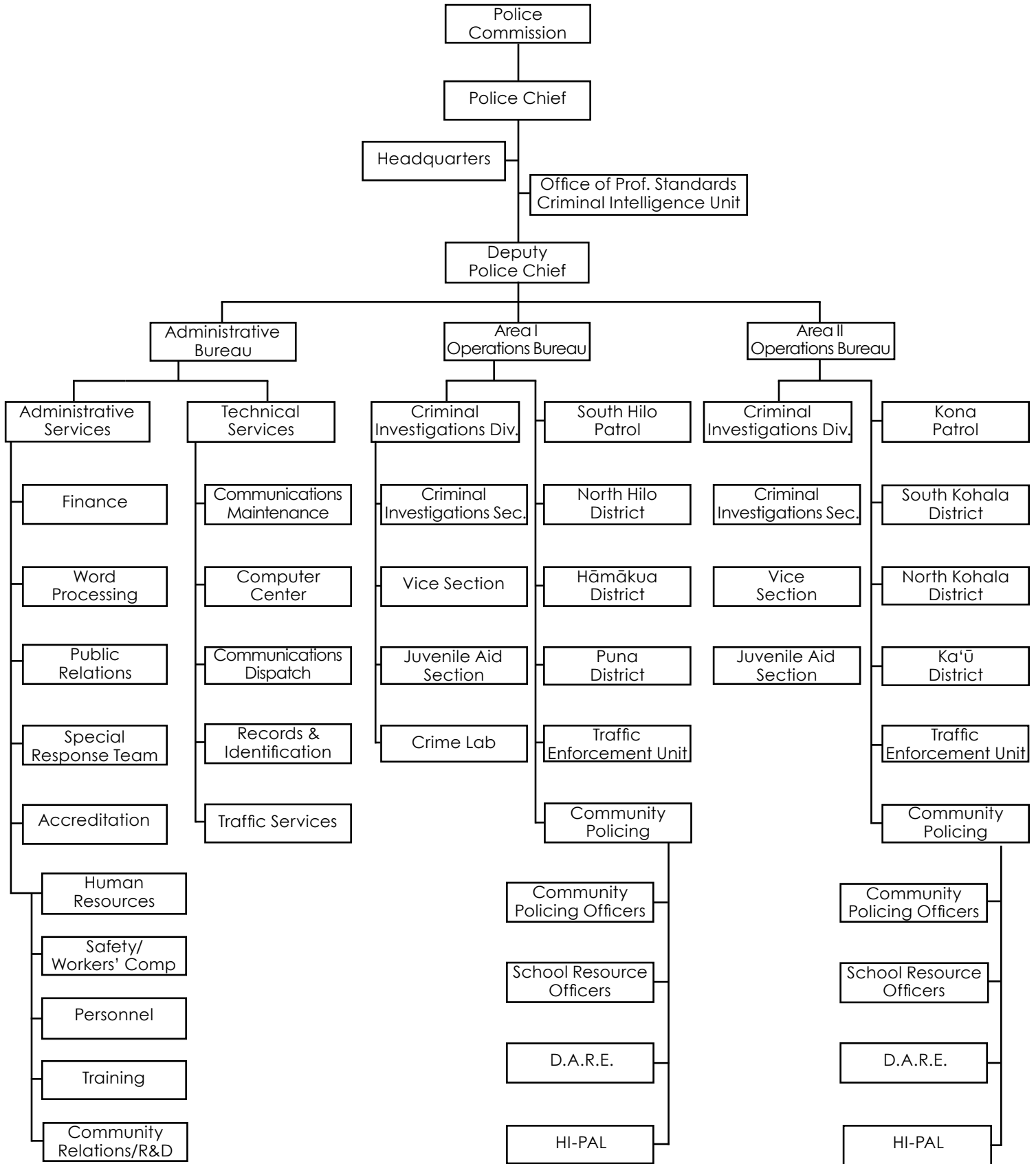
During Fiscal Year 2012 – 2013, Community Policing officers worked in

partnership with the following groups, resulting in the following outcomes:

Groups	Outcomes
16 Department of Education elementary and intermediate schools	DARE classes provided by SROs to about 2,500 students in grades 5-8.
Kokua Pāhoa, Puna Action Team, Neighborhood Place of Puna, QLCC, Prosecutor's Office	Continued participation, started by the Weed and Seed project, by stepped-up police enforcement and joining with various neighborhood groups in activities such as Springtime Jam, bike patrol and a wrestling clinic/drug presentation for 100+ kids.
Hawai'i National Guard	Youth Challenge—career presentation/mentor
HI-PAL, Department of Parks and Recreation	Spring Basketball Tournament, Click It or Ticket 3-on-3 Basketball Tournaments, Halloween Havoc 3-on-3 Basketball Tournament, Fall Intermediate Basketball League, Winter Basketball Classic, Summer Basketball League

Groups	Outcomes
Downtown Improvement Association, Hawai'i County Planning Department, Friends of Downtown Hilo	Continued work with "Envision Downtown Hilo 2025"
Boy Scouts of America-Aloha Council	Safety and fingerprinting merit badges, training of more than 100 scouts
Public and private schools	Anti-bullying presentations
Drug Court	Police Department liaison
NFL Pro Bowl	Football clinic at Kea'au High School
HI-PAL, Hope Chapel	Annual HI-PAL/Hope Chapel 3-on-3 Basketball Tournament in Kona
Neighborhood Place of Puna	School supply giveaway

Hawai'i Police Department Organization Chart



Commanders



Paul Ferreira
Deputy Police Chief



Marshall Kanehailua
Assistant Chief
Administration



Henry Tavares
Assistant Chief
Area I Operations



Paul Kealoha
Assistant Chief
Area II Operations



Samuel Thomas
Major
Administrative Services
Division



James O'Connor
Major
Technical Services
Division



Randy Apele
Major
Operations Bureau
Area I



Mitchell Kanehailua
Major
Operations Bureau
Area II

Office of Professional Standards/ Criminal Intelligence Unit

Commander: Capt. Samuel Kawamoto

The Office of Professional Standards (OPS) and Criminal Intelligence Unit (CIU) report directly to the police chief.

Office of Professional Standards (OPS)

Office of Professional Standards Mission Statement

The mission of The Office of Professional Standards is to protect and serve the public, the employee and the department through fair, thorough and proactive investigations of alleged misconduct, while preserving the spirit of aloha.

The primary responsibility of the Office of Professional Standards, formerly known as the Internal Affairs Unit, is to ensure the integrity of the Hawai'i Police Department by performing fair and thorough investigations of alleged misconduct by its employees. The Office of Professional Standards conducts investigations of complaints brought directly to the attention of the department or through the Hawai'i Police Commission.

The Office of Professional Standards conducts Quality Control and Compliance Inspections of department areas, property, vehicles, personnel and issued equipment. The unit also assists administration personnel in conducting the department's drug

testing program.

The Office of Professional Standards includes two selected detectives assigned to Police Headquarters. The unit is commanded by a captain, who reports to the Office of the Chief.

During Fiscal Year 2012–2013, the Office of Professional Standards conducted 24 administrative investigations, 39 internal inquiries into actions by police department personnel and provided 34 in-service training sessions to employees. The Office of Professional Standards also conducted 39 quality control and compliance inspections of various elements of the department to prevent abuse, misuse, fraud and waste of department resources.

Criminal Intelligence Unit (CIU)

The mission of the Criminal Intelligence Unit is to collect, evaluate, analyze, and disseminate intelligence data regarding criminal and terrorist activity to aid the Hawai'i Police Department in a proactive approach of enforcing laws, preserving peace and providing a safe environment.

The Criminal Intelligence Unit consists of two detectives and four officers assigned to Police Headquarters, equally divided among the Hilo and Kona stations. The unit is commanded by a captain, who reports directly to the Office of the Chief.

The Criminal Intelligence Unit gathers information from all sources in a manner consistent with the law in support of efforts to provide intelligence on the existence, identities and capabilities of criminal suspects and enterprises. The unit also conducts background investigations on applicants seeking employment with the Hawai'i Police Department and criminal history checks for other county, state and federal agencies.

The Criminal Intelligence Unit is part of the Inter-Island Criminal Intelligence Unit, which includes the intelligence units of the

Honolulu Police Department, Maui Police Department and Kauai Police Department.

The Criminal Intelligence Unit is a member of the Law Enforcement Intelligence Unit, which is composed of law enforcement agencies in the United States, Canada and Australia.

The Criminal Intelligence Unit is also part of the Joint Terrorism Task Force, whose mission is to partner with the FBI to maximize cooperation and to create a cohesive unit capable of addressing the most complex terrorism investigations.

In addition, the Criminal Intelligence Unit is part of the U.S. Marshal's Service Hawai'i Fugitive Task Force, whose mission is to investigate and arrest—as part of a joint law enforcement operation—persons who have active state and federal felony warrants for their arrest.

During Fiscal Year 2012–2013, the Criminal Intelligence Unit provided intelligence information (which in whole or in part led to the initiation of 292 criminal investigations), submitted 380 intelligence reports, conducted 374 criminal history checks and provided 144 in-service training sessions.

Administrative Bureau

Commander— Assist. Chief Marshall Kanehailua

The Administrative Bureau is divided into two divisions: Administrative Services and Technical Services. A police major heads each one.

Administrative Services Division

Commander: Maj. Samuel Thomas

The Administrative Services Division includes the Accreditation Section, the Finance Section, the Word Processing Center, the Public Relations Section, the Community Relations Section, the Human Resources Section, the Training Section and the Special Response Team.

The **Accreditation Section** is responsible for maintaining accreditation for the Hawai'i Police Department. The staff consists of one lieutenant, who is the accreditation manager, two sergeants and a clerk. On November 17, 2012, for the first time in its history, the Hawai'i Police Department achieved accreditation by the Commission on Accreditation for Law Enforcement Agencies (CALEA)[®]. The next on-site assessment is in three years, scheduled for August 2015. Accreditation allows for the Hawai'i Police Department to achieve excellence by constantly reviewing policies, procedures and general orders, which guide and govern law enforcement activities on Hawai'i Island.

The **Finance Section** is responsible for payroll, accounts payable, officers' gas and oil accounts, special duty work, inventory and other finance-related tasks.

The **Word Processing Center** is responsible for transcribing all narrative police reports that sworn personnel dictate into an internet/web-based Dictation Enterprise

Platform system. The system was implemented in September 2010, replacing an aged and outdated on-site digital recording system. Throughout the 2012–2013 fiscal year, the Word Processing Center managed to keep up with the high workload through hard work and perseverance. The dictated reports transcribed by the Word Processing Center are routed via the Records Management System for officers' approval and timely prosecution. The reports become the official documents that detail the department's criminal investigations. The Word Processing Center consists of one clerical services supervisor, one assistant clerical supervisor and 13 clerks. Nearly 29,000 reports were transcribed totaling more than 293,000 minutes of dictation.

The **Public Relations Section** is responsible for maintaining the department's website and Nixle alerts, responding to inquiries from the news media, managing the Police Department's Community Satisfaction Survey, producing the cable access television program "Hawai'i Island's Most Wanted," and publishing the department's annual report and employee newsletter. In Fiscal Year 2012–2013, the department published 684 media releases to the department's website and through the Nixle service that allows the public to receive text messages, emails or both directly from the Police Department.

The **Community Relations Section** is responsible for maintaining programs to help the community and increase its awareness of police operations, which include station tours for civic groups, students, parents and out-of-town visitors as well as managing requests for speakers on police-related subjects for community groups, scouts and schools.

The **Special Response Team** is mobilized for high-risk, tactical operations involving barricaded suspects, hostage situations and high-risk warrant services. The team also provides security for visiting dignitaries and politicians (See more about the SRT on page 6.)

In Fiscal Year 2012–2013, the **Human Resources Section**—in cooperation with the Hawai‘i County Department of Human Resources—conducted an open recruitment for police officer recruits. The campaign involved media advertisements, participation by police officers and Department of Human Resources staff at career fairs, and recruitment talks at various island schools. The Police Department planned to fill all vacant sworn positions during the first quarter of the 2013–2014 fiscal year. On March 1, 2013, the Police Department reallocated four existing vacant positions, resulting in the addition of a new police lieutenant position in North Hilo and new police sergeant positions in Ka‘ū, North Kohala and the Area II Traffic Enforcement Unit.

The **Training Section** conducted training for the 80th Police Recruit Class which began with 25 police officers during Fiscal Year 2012–2013. Those officers received a wide variety of field training while riding along with and being evaluated by field training officers. This training included the practical applications of criminal investigations, principles of police patrol, interview and interrogation, constitutional and

citizens’ rights, federal, state and county statutes, and other topics pertinent to law enforcement.

Also during this year, the Police Department provided 34,530 hours of instruction and training to its sworn police officers and civilian employees. Those training sessions covered a wide variety of topics selected to meet the department’s three primary training initiatives:

▶To improve the overall quality of services the department provides to the Hawai‘i Island community, personnel received training on numerous topics, which included the Americans with Disabilities Act, cultural awareness, domestic violence awareness, service animals and mobility devices, and people with disabilities. The department also continued its training program pertaining to community policing philosophies and strategies to be employed by all officers.

▶In keeping abreast of the latest investigative techniques and law enforcement trends, personnel from the Criminal Investigations Sections, Juvenile Aid Sections and Vice Sections attended a wide variety of training courses provided by nationally recognized presenters. They included drug investigations and deportation proceedings, courtroom testimony and presentation, domestic violence and sexual assault training, and at-scene traffic crash/traffic homicide investigations.

▶For providing employee development training opportunities to both sworn and civilian employees during this fiscal year, training covered such topics as prevention of workplace violence, discipline, workplace safety, customer service, investigating workers’ compensation and accident claims, basic skills for the new supervisor, ethics and a unique training program that teaches participants to provide service with Aloha.

Technical Services Division

Commander: Maj. Larry Weber / Maj. James O'Connor

The Technical Services Division is in charge of the Communications Dispatch Center, Communications Maintenance Section, Computer Center, Records and Identification Section and Traffic Services Section.

During the 2012–2013 Fiscal Year, the **Communications Dispatch Center** received 131,718 9-1-1 calls with 19.98 percent of those transferred to the Fire Department.

All requests for police service are recorded, logged and assigned by Dispatch personnel using a computer aided dispatch system. Mondays (with 28,560 calls for service) and Fridays (with 28,964 calls for service) were shown to be the busiest days. A total of 188,494 events were documented during this fiscal year.

During this fiscal year, the Communications Dispatch Center received and processed 462 requests for 9-1-1 recordings from the Office of the Prosecuting Attorney, police personnel and the public.

The Police Department continues to update the master street address guide. During the fiscal year, 7,307 transactions were completed, including changes of addresses, insertions and deletions of street records, and customer change reports.

The Communications Center continues to work with wireless service providers to enhance the Wireless Enhanced 9-1-1 system deployed in April 2007. It also continues to edit and add new layers to the Positron mapping system, which helps 9-1-1 operators locate callers.

The Police Department along with the Fire Department, contracted with Hawaiian Telcom, Inc., the current E9-1-1 service

provider in the State of Hawai'i and local exchange carrier, to migrate from the current 9-1-1 Emergency Telephone Service system to a Next Generation Emergency Services IP Network enabled system for 9-1-1 service. In September 2012, Hawaiian Telcom announced it would be moving to the Intrado Viper system in place of the Solacom Guardian previously installed in Hawai'i County. Implementation and "cut over" to this new platform was scheduled to take place early in Fiscal Year 2013–2014.

The **Communications Maintenance Section** is responsible for maintenance and repair of all county-owned radio sites. This includes towers, shelters, microwave radios, repeaters, base radios, mobile radios and hand-held portable radios. The Communication Maintenance Section installs and maintains all radio and emergency warning equipment in the Police Department's fleet and subsidized vehicles. During Fiscal Year 2012–2013, the Communications Maintenance Section completed installations in 136 Police Department vehicles.

An additional responsibility assigned to the Communications Maintenance Section is the repair and maintenance of Civil Defense sirens. The Radio Shop crew responded to 57 Civil Defense siren failures during this period.

The Communications Maintenance Section conducts preventive inspections and maintenance of the district stations and radio sites. During Fiscal Year 2012–2013 it conducted 134 inspections.

The **Computer Center** is responsible for interconnectivity between all stations and substations, assuring a secured networking

infrastructure, installing and maintaining computer equipment, installing and troubleshooting software systems and providing technical assistance for varying computing issues.

During Fiscal Year 2012–2013, the Computer Center continued to support and maintain approximately 300 desktop computer systems, primarily purchased in 2003, and more than 300 Mobile Data Terminals installed in officers' vehicles. The Computer Center also completed the installation of software for the Office of Professional Services and the Criminal Intelligence Unit.

The **Records and Identification Section** is responsible for police records, evidence, fingerprint examinations, processing subpoenas and court documents, compiling and disseminating statistical information and processing firearm permit applications and registrations—including thorough background checks on each individual applying for a long gun or handgun permit.

Over the past several fiscal years, the Records and Identification Section has noticed a steady increase in the number of firearm permit applications and registrations. In Fiscal Year 2012–2013, 14,958 firearms

were registered in Hawai'i County, compared with 7,556 the previous year, which is a 98 percent increase.

During the 2012–2013 Fiscal Year, the Hawai'i Police Department requested reimbursement of \$490,015 in federal grant funds—which the **Traffic Services Section** oversees—for traffic enforcement and equipment purchases to improve traffic safety. Police continued efforts to make Big Island roadways safer by using the grant funds to pay for overtime for checkpoints and other enforcement projects aimed at reducing injuries and deaths in motor vehicle crashes by increasing seat belt use rates, apprehending impaired drivers, and enforcing laws pertaining to distracted drivers, speed regulations and “outlaw” road racing.

Other Traffic Services Section highlights include:

- ▶ 82 road closure permits issued
- ▶ 210 violation letters sent out to motorists
- ▶ 52 school crossing guard checks conducted
- ▶ 68 impound letters sent out to owners of abandoned vehicles.

Operations Bureaus

Area I—East Hawai'i

Commanders: Assist. Chief Henry Tavares • Maj. Randy Apele

The Area I Operations Bureau includes investigative and patrol operations in East Hawai'i. Its districts include Hāmākua,

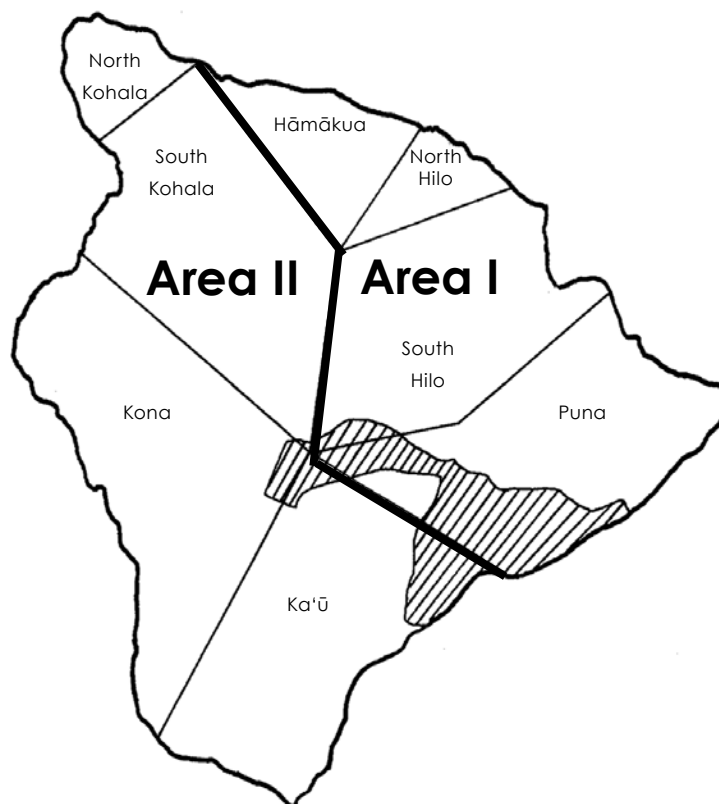
North Hilo, South Hilo and Puna—an area encompassing 1,685 square miles. A captain heads each of the four patrol districts.

Area II—West Hawai'i

Commanders: Asst. Chief Paul Kealoha • Maj. James O'Connor / Maj. Mitchell Kanehailua

The Area II Operations Bureau includes investigative and patrol operations in West Hawai'i. The 2,345 square-mile

area includes the districts of North Kohala, South Kohala, Kona and Ka'ū, each headed by a captain.



Criminal Investigations Divisions

Commanders: Area I—Capt. Mitchell Kanehailua / Capt. Robert Wagner • Area II—Capt. Chad Basque

The Police Department's investigative operations fall under the Criminal Investigations Divisions—one in Area I and one in Area II.

CID commanders oversee the operations

of the Criminal Investigations Section, Juvenile Aid Section and Vice Section with operations in both Area I and Area II.

Area I also includes the Crime Lab in Hilo.

Criminal Investigations Sections (CIS)

Commanders: Area I—Lt. Mitchell Kanehailua / Lt. Gregory Esteban • Area II—Lt. Gerald Wike

The Criminal Investigations Sections (CIS) investigate all major crimes, such as murders, felony assaults, major property crimes and financial crimes. In addition, CIS detectives respond to all reported suicides, child deaths and other deaths with questionable circumstances.

Area I Criminal Investigations Section detectives investigate felony cases in the South Hilo, Puna, North Hilo and Hāmākua Districts. During Fiscal Year 2012 – 2013, Area I CIS investigated 2,060 crimes. Of those, 480 were burglaries, 519 were thefts, and 492 were financial crimes. In comparison with the previous fiscal year, this represents a 29.7 percent decrease in the number of burglaries investigated, a 33.4 percent increase in thefts and a 112.9 percent increase in financial crimes. The overall solution rate was 54.6 percent.

Area II Criminal Investigations Section detectives investigate felony cases in the South Kohala, North Kohala, Kona, and Ka'ū districts. During Fiscal Year 2012–2013, Area II CIS investigated 820 crimes. Of those, 309 were burglaries, 208 were thefts and 105 were financial crimes. In comparison with the previous fiscal year, this represents a 13

percent increase in burglaries, a 5 percent decrease in thefts and a 28 percent increase in financial crimes. The overall clearance rate was 65 percent.

Area I detectives investigated 10 murder cases and five attempted murder cases. At the end of the fiscal year, three murder cases were pending, representing an overall solution rate of 80 percent. No murders or attempted murders were reported in Area II.

Among the many cases investigated by the Criminal Investigations Sections, the following were particularly noteworthy:

▶ On July 18, 2012, detectives investigated a shooting in the parking lot of an apartment complex on Kalaniana'ole Avenue in Hilo after a 34-year-old Hilo man reported that another 34-year-old Hilo man shot at him during a confrontation. The suspect was arrested a few days later and charged with attempted murder. At the end of the fiscal year, he remained in custody pending trial.

▶ On July 22, 2012, detectives investigated the murder of a 30-year-old Honomū man who was stabbed in his home by his 49-year-old male housemate. The autopsy revealed that the victim died of a wound to his heart. The housemate was arrested and charged with

murder and was awaiting trial.

▶ On October 3, 2012, a 48-year-old Mountain View man was arrested and charged with the January 26, 2012, murder of a 53-year-old Mountain View man. The victim's body was found at the rear of his home. An autopsy revealed that he was shot several times and strangled. A key witness in the case provided Area I CIS detectives with specific information that was corroborated with the recovery of evidence and the identification of the suspect, who eventually pled guilty and was sentenced to prison.

▶ During the early morning hours of November 26, 2012, a 26-year-old Kealakekua man reported that he was assaulted and robbed by several men while in the parking lot of a marketplace in downtown Kailua-Kona. The suspects fled the area with the victim's backpack. The victim sustained a fractured jaw, cuts and bruises. Detectives conducted an extensive investigation over a two-week period. As a result, four Kailua-Kona men between the ages of 20 and 22 were arrested and charged with first-degree robbery, first-degree assault and third-degree theft. The cases were referred to the Office of the County Prosecutor.

▶ On December 5, 2012, two inmates assaulted a correctional worker and escaped from Hawai'i Community Correctional Center in a stolen vehicle, resulting in an extensive multi-agency search. A 34-year-old man who was being held on a prior attempted murder charge, was taken into custody two days later as he was hiding in a secluded subdivision on the south side of Hawai'i Island. He was charged with escape and other related offenses. The second suspect, a 32-year-old man, was located at a home in the Puna District within a week of the escape and was also arrested and charged. At the end of the

fiscal year, both suspects remained in custody awaiting trial.

▶ On December 16, 2012, detectives investigated the murder of a 54-year-old Nānāwale Estates man who was found bludgeoned to death in his home. Detectives developed information that led them to a 36-year-old male suspect, who was arrested the following day. The suspect was subsequently charged with murder but was found unfit to stand trial. At the end of the fiscal year, he remained in the care of the state hospital.

▶ On December 28, 2012, police investigating a reported burglary of a home in Hawaiian Acres learned from a relative that the homeowner had not been seen for some time. Police recovered the recorder for a surveillance system that had recently been installed at the house. Detectives discovered surveillance footage that led them to believe the homeowner had been murdered. Acting on a tip, detectives recovered the victim's remains in a remote location. An autopsy revealed that he had been strangled. Detectives arrested a 19-year-old man and a 30-year-old man, both from Kurtistown, and charged both with murder. At the end of the fiscal year, they remained in custody awaiting trial.

▶ On December 29, 2012, police responded to the bayfront area in Hilo to reported gunshots and discovered the body of a 32-year-old man on the shoulder of the roadway. An autopsy revealed that he died from multiple gunshots. Detectives continued the investigation, which led them to the identity of a 55-year-old male transient, who was arrested and charged with murder. At the end of the fiscal year, he remained in custody pending trial.

▶ On January 2, 2013, police were sent to investigate a report of gunshots in an area near the Waiākea ponds in Hilo and encountered

a man hiding under a vehicle parked nearby. He fired several shots at two responding police officers before fleeing the area. Both officers sustained gunshot wounds to their lower extremities and survived. A 31-year-old Hilo man was identified as a suspect and became the subject of an intensive search. The suspect attempted to take his own life when the police tactical unit closed in on him. His attempt was unsuccessful, however, and he survived. Detectives subsequently arrested and charged him with first-degree murder and other related offenses. At the end of the fiscal year, he remained in custody awaiting trial.

▶ On January 7, 2013, detectives investigated the murder of a 38-year-old Hilo man after he was stabbed in his home in the upper Kaumana area. His 37-year-old girlfriend was taken into custody, but she was released after police and prosecutors were unable to charge her. Detectives continue to actively follow up on leads in the case and have not ruled out the victim's girlfriend as a suspect.

▶ On January 18, 2013, while police were conducting a search for another murder victim, they located a set of decomposing remains in a remote location on the outskirts of Hilo. Detectives were able to identify the remains and an autopsy ruled that the victim had been murdered. No arrests have been made in the investigation, which remains active.

▶ On January 31, 2013, police and detectives responded to a reported armed robbery in Downtown Hilo. A 33-year-old female merchant reported that a female suspect had entered the business, brandished a firearm and demanded money before fleeing the area in a vehicle. Police and detectives located the vehicle and arrested a 23-year-old Hilo woman, who was charged with robbery and related offenses.

▶ On February 4, 2013, a commercial

burglary occurred at a business establishment in Ka'ū during which electronic products valued at more than \$5,000 were stolen. Detectives continued the investigation and developed a lead from a concerned citizen that resulted in a search warrant being executed at a home in Hawaiian Rancho Estates. There, detectives located stolen items from the burglary and arrested three adults. Detectives recovered additional stolen items from the burglary that the suspects had discarded at a refuse site in Ka'ū. The three suspects were charged with second-degree burglary, second-degree theft and second-degree criminal property damage, all felony offenses. The cases were referred to the Office of the Prosecuting Attorney.

▶ On February 6, 2013, two visitors reported to police that while they were camping at a remote campground on the outskirts of Hilo, they were accosted by a local male and robbed at knife point of personal items and a rental vehicle. Detectives were able to identify an 18-year-old suspect. He was arrested and charged with robbery and related offenses.

▶ On February 11, 2013, police responded to a report of gunshots in a home on Leilani Street in Hilo. Responding officers encountered a 34-year-old Hilo man in front of the residence. Police discovered the bodies of a 45-year-old woman and a 74-year-old woman inside. An autopsy ruled that both died from gunshot wounds. The 34-year-old man was subsequently charged with the murders. At the end of the fiscal year, he remained in custody awaiting trial.

▶ Detectives re-examined the 2006 murder investigation involving the death of a 56-year-old woman found lying on a lava embankment next to her home in Hawaiian Ocean View

Estates. Her 59-year-old husband, a retired LAPD detective, reported that she had fallen over the embankment while hanging laundry. An autopsy revealed that the victim had died due to blunt force trauma to her head. Additional forensic testing was conducted on evidence recovered during the initial investigation using DNA technology that had not been available in 2006. The results provided additional evidence that enabled prosecutors to indict the husband for murder, and he was arrested on May 13, 2013. During a plea agreement, the husband admitted to killing his wife. He was convicted of manslaughter and sentenced to 20 years imprisonment.

▶ On May 20, 2013, police responded to a report of a gunshot at a home in the Nānāwale Estates subdivision and discovered the body of a 40-year-old man. An autopsy determined that he died from a single gunshot wound. Detectives located and arrested a 43-year-

old male neighbor, and he was charged with murder and related offenses. At the end of the fiscal year, he remained in custody pending his trial.

▶ On May 28, 2013, police responded to a report of a body found caught in a fishing line off the Kalapana coast. Detectives recovered the body of a 25-year-old woman. An autopsy determined that she had been strangled. Detectives identified the victim's 22-year-old boyfriend as the suspect and were actively pursuing leads in the investigation as the fiscal year came to a close.

▶ On June 25, 2013, police responded to a home in the Leilani Estates subdivision in Puna after receiving a report that a 20-year-old man had been shot with a spear gun. A 49-year-old male neighbor was arrested and subsequently charged with attempted murder. At the end of the fiscal year, he remained in custody awaiting trial.

Juvenile Aid Sections (JAS)

Commanders: Area I—Lt. Lucille Melemai /Area II—Lt. Gilbert Gaspar

The Juvenile Aid Sections are primarily responsible for the investigation of sexual assaults of adults and minors, domestic violence and other family-related crimes, and internet crimes involving child exploitation. JAS also investigates runaways, truants, curfew violators and juveniles involved in serious crimes. JAS is divided into three specialized units: the Sex Crimes Unit (specializing in sexual assault investigations), the Domestic Violence Unit (specializing in domestic abuse cases) and the General Detail Unit, which covers all other crimes related to juveniles. Two officers in Area I and one in Area II are trained as canine handlers. With the use of their tracking dogs, they assist in

investigations of missing persons.

In January 2013, the Area II JAS Sex Assault Unit acquired three new detectives. Two detectives transferred into the unit from the Area II Criminal Investigations Section and one detective received a promotion into the unit. All three detectives received training in sex assaults, including sex assaults involving children.

During the 2012–2013 fiscal year, Juvenile Aid Section detectives investigated 1,293 cases, including sexual assaults, domestic violence, other crimes against women, child pornography and juvenile-related crimes. This was in addition to 321 investigations of juveniles involved in serious crimes and status

offenses (such as runaway, truancy, protective and placement services and curfew violations) and 154 additional offenses unrelated to sexual assault, domestic violence or juvenile offenses.

Among the many cases the Juvenile Aid Section investigated this fiscal year, the following were particularly noteworthy:

▶In October 2012, Area I Juvenile Aid Section detectives investigated an internet child pornography investigation cooperatively with the Oahu FBI. Investigators for the FBI and the National Center for Missing and Exploited Children enhanced a photo to develop an image of what appeared to be a Hawai'i Island telephone book. Several members of the public assisted the investigation by providing information that led to the identity and arrest of a Puna man. The children were located and police took them into protective custody. A federal judge sentenced the offender to 20 years in prison for child molestation and 10 years for distributing images of the abuse on the internet. The offender was ordered to register as a sex offender after his prison release and to be subject to court supervision for the rest of his life.

▶In November 2012, Kona Community Hospital emergency room personnel notified police after a 1-year-old girl was brought to the emergency room with hot water burns about her body. The mother's boyfriend claimed he had been giving the baby a bath under lukewarm running water when the downstairs neighbor flushed the toilet, causing the running water to get hot.

Doctors at two hospitals opined that injuries were not consistent with the boyfriend's story. Photos of the victim's injuries were sent to a burn expert at the University of Wisconsin for an expert opin-

ion, and Area II JAS detectives continued the investigation.

▶In March 2013, Area I Juvenile Aid Section detectives continued the investigation into reported sexual assaults of an adult female victim in a Hilo parking lot. Two men were arrested and charged with the offenses and indicted by a Hilo grand jury for the crimes. One of the men had been indicted by a Kona grand jury in August 2012 for sexual assault in Kona of an unrelated adult female victim that was reported to have occurred in December 2011 at a beach.

▶In March 2013, Area I Juvenile Aid Section detectives continued the investigation into a reported assault in the Puna District. An adult male was found stabbed multiple times and lying on the side of a road in the Ainaloa subdivision. His girlfriend was arrested after it was determined that she and the victim had been involved in a domestic argument. He was flown to Oahu for treatment and released several days later in good condition. She was charged with felony assault and abuse of a family/household member.

▶In March 2013, Area I Juvenile Aid Section detectives initiated an East Hawai'i island-wide search for a 2-year-old Lana'i boy. It was reported that his non-custodial father and paternal grandmother had refused to return him to his custodial parent. After an extensive search, all three were located at a home in the Puna District. The boy was unharmed and reunited with his mother. His father and paternal grandmother were arrested and later charged with felony custodial interference.

▶In May 2013, Kona Community Hospital emergency room personnel notified police when medics brought in a

2-month-old boy after the infant's parents reported that the baby had a possible seizure and was lethargic.

The emergency room doctor performed a CT scan on the infant and discovered subdural bleeding in the brain. The infant

was transported to Kapiolani Medical Center for Women and Children for further treatment. The infant was released from the hospital a few days later to Child Welfare Services, and Area II JAS detectives continued the investigation.

Vice Sections

Commanders: Area I—Lt. Burt Shimabukuro • Area II—Lt. Sherry Bird

The Vice Sections—consisting of the Ice Task Force, DEA deputized Airport Task Force and General Detail—are primarily responsible for preventing and suppressing all forms of commercialized vice activity, including prostitution, gambling, cruelty to animals and the importation and distribution of illegal narcotics.

The Vice Section has three narcotics canine teams, with one team assigned full time to the Airport Task Force. The Airport Task Force focuses its investigative efforts on the importation and exportation of illegal narcotics and/or proceeds from narcotics distribution by focusing on parcel interdiction at the various mailing services and at the two main shipping ports of entry and by conducting passenger screenings at the various airports. The General Detail focuses its efforts on investigations involving cruelty to animals, gambling, prostitution and the commercial promotion of marijuana. The Ice Task Force focuses its efforts on the importation and distribution of crystal methamphetamine, as well as cocaine, heroin, designer drugs and diverted prescription pills.

Crystal Methamphetamine (also known as “ice”) continues to be the greatest drug threat to the community, as the drug is continually being imported into the island from Honolulu

and the West Coast by way of body carriers and parcel services.

The abuse of pharmaceutical prescription drugs (known as “pharmaceutical diversion”) continues to remain an alarming drug threat in the United States, including in Hawai‘i County. It has been reported that pharmaceutical drugs—legally prescribed or diverted—were present in approximately 90 percent of the search warrants executed for illegal narcotics. The most commonly recovered pharmaceutical drugs during these investigations were oxycodone, hydrocodone, methadone and illegal steroids.

In November 2008, Hawai‘i County voters passed a bill for an ordinance making the adult personal use of marijuana the lowest law enforcement priority of the Hawai‘i Police Department. The bill prohibits the Hawai‘i County Council from accepting any federal funding for marijuana eradication. During the fourth year of this bill, the Hawai‘i Police Department’s Vice Sections recovered 32,768 marijuana plants despite the absence of eradication missions. The Hawai‘i Police Department continues to research and develop new ways to solve the problem of commercial cultivation and distribution of marijuana in the County of Hawai‘i. Abuse of medical marijuana laws, which were enacted

in Hawai'i in 2000, also is common.

Vice officers belong to the statewide Hawai'i Narcotics Task Force and are involved in joint operations with the Drug Enforcement Administration, FBI, Immigration and Customs Enforcement and the Bureau of Alcohol, Tobacco, Firearms and Explosives. The Vice Sections are also a part of the Hawai'i High Intensity Drug Trafficking Area Task Force. They continue to strive to identify, infiltrate and dismantle drug trafficking organizations in Hawai'i County from the street to the highest level.

In 2012–2013, Vice Section officers conducted 1,861 drug investigations resulting in 664 arrests and 2,335 charges. In addition, Vice officers recovered the following illegal drugs:

- ▶ More than 12.21 pounds of crystal methamphetamine (plus an additional 18 pounds in a joint operation with the FBI)
- ▶ 32,768 marijuana plants
- ▶ 170.21 pounds of dried marijuana
- ▶ 11.74 ounces of hashish
- ▶ 5.9 ounces of heroin
- ▶ 7.65 ounces of cocaine
- ▶ hundreds of prescription pills

Among the many cases investigated, the following were particularly noteworthy:

▶ In July 2012, Area I Vice Officers initiated the service of search warrants at three different arcade establishments in the Hilo area. Fifty-four electronic gaming machines were recovered and more than \$40,000 in cash was seized. Three individuals were arrested. Through this investigation, it was revealed that gambling has evolved to include on-line internet schemes.

▶ In September 2012, the Area II General Detail Unit, along with Ka'ū patrol officers, executed a search warrant on a warehouse located in the Hawaiian Ocean View Estates

subdivision and recovered 215 marijuana plants, 979.1 grams of dried processed marijuana, paraphernalia associated with the cultivation of marijuana, and an unregistered Savage brand shotgun with ammunition. A 22-year-old woman was located at the property and was arrested and charged with one count of first-degree commercial promotion of marijuana, one count of first-degree promoting detrimental drugs, two counts of drug paraphernalia, one count of permit to acquire, one count of registration mandatory and one count of possession of a firearm with intent to facilitate the commission of a felony drug offense. Her bail was set at \$26,750.

▶ In September 2012, a burglary task force was formed to address a significant spike in property crimes in the Kona district during the months of August and September 2012. The property crimes included residential burglaries, unauthorized control of propelled vehicles, thefts and other related crimes. The task force was composed of approximately 20 officers from the Area II Vice and Criminal Investigations Sections and the Special Enforcement Unit and was responsible for assisting in the expeditious compilation of certain cases and for locating and apprehending or contacting specific persons allegedly involved in the property crimes. The task force successfully contacted all of the identified persons of interest and arrested 16 individuals for a total of 61 criminal offenses. In addition, the task force located, recovered, and returned stolen property that had been taken from six previously reported burglaries and one previously reported theft. These arrests allowed several investigations to be closed, and the property crime rates dropped significantly in the following months.

▶ In October 2012, Area I Officers initiated a search warrant on a home in the Tiki

Gardens subdivision. Vice Officers recovered 882 marijuana plants ranging in height from 6 inches to 4 feet. They also recovered 2,236 grams of dried processed marijuana, 103 grams of hashish, 2.5 grams of heroin, and 232 hydrocodone tablets. Nine people were arrested.

▶In November 2012, Area II Ice Task Force officers executed a narcotic search warrant on a vehicle occupied by three men—ages 51, 31 and 24—in the Kailua-Kona area. Officers recovered .25cc of liquid heroin in a syringe, 5 grams of heroin, 4.4 grams of crystal methamphetamine, 22.4 grams of dried marijuana, 32 hydrocodone pills, 16 diazepam pills, 16 alprazolam pills, three digital weighing scales, drug paraphernalia, two credit cards not belonging to the men and \$328 in cash. The men were arrested for three counts of promoting dangerous drugs, five counts of drug paraphernalia, one count of methamphetamine trafficking, one count of promoting harmful drugs, one count of promoting detrimental drugs and one count of theft/forgery of a credit card. They were later released pending additional investigation, and the cases have since been deferred to the Office of the Prosecuting Attorney.

▶In November 2012, Area II Ice Task Force officers executed a search warrant on property belonging to a 41-year-old man in the Kailua-Kona area. Officers recovered 6 grams of cocaine, 30.4 grams of dried marijuana, 1 gram of hashish, 0.4 grams of ketamine, 10 hydromorphone pills, five oxycodone pills, five methylphenidate pills, one clonazepam pill, three digital scales, drug paraphernalia and \$600 in cash. The man was arrested for one count of promoting detrimental drugs, six counts of promoting dangerous drugs, one count of promoting harmful drugs and four

counts of drug paraphernalia. He was released pending further investigation, and the cases have since been deferred to the Office of the Prosecuting Attorney.

▶In January 2013, Area I Vice officers initiated a search warrant on a vehicle and recovered 29 grams of crystal methamphetamine. One man was arrested.

▶In January 2013, the Area II Vice Section executed a search warrant on a motel room in Kamuela occupied by a 20-year-old man and a 22-year-old woman after South Kohala Patrol Officers observed narcotics and drug paraphernalia while tending to an unresponsive man there. Upon execution of the search warrant, officers recovered 166.5 grams of powdered cocaine, approximately 7 ounces of marijuana, narcotics paraphernalia associated with heroin and cocaine use, a digital weighing scale, plastic packets and approximately \$8,800 in cash. Vice officers also executed a search warrant on a vehicle belonging to the man and recovered plastic packets containing cocaine residue and 12.1 grams of marijuana. The man and woman were arrested and charged with two counts of first-degree promoting dangerous drugs, eight counts of third-degree promoting dangerous drugs, two counts of third-degree promoting detrimental drugs, one count of second-degree promoting detrimental drugs, one count of first-degree promoting detrimental drugs, seven counts of drug paraphernalia, and one count of promoting a controlled substance in, on, or near schools, school vehicles, or public parks. Bail was set at \$313,000 for each.

▶In January 2013, the Airport Task Force intercepted a parcel containing 230.6 grams of crystal methamphetamine destined for a home in the Kailua-Kona area. During a subsequent joint operation with the Airport

Task Force, the Area II Vice Section and special agents with the Drug Enforcement Administration, the intended recipient of the parcel was identified as a 26-year-old-man. He was taken into custody for methamphetamine trafficking and later transported to the Federal Detention Center on Oahu to face federal prosecution.

▶In February 2013, Area I Vice officers served a search warrant on a home on Kokokahi Street in the Fern Forrest subdivision. This marijuana-growing operation used an elaborate underground bunker, which was built under a warehouse as its cover. Vice personnel recovered 537 plants ranging from 6-inches to 4-foot tall. They also recovered 30.35 pounds of dried processed marijuana. Numerous pieces of equipment and property used to facilitate this growing operation were also recovered for forfeiture.

▶In February 2013, the Area II Vice Section executed a search warrant on a home in Waikoloa. During the search, officers recovered 13.5 grams of methamphetamine, 0.5 grams of marijuana, two handguns and various items of drug-related paraphernalia. They also recovered \$8,852 in cash and two flat-screen televisions for forfeiture. At the scene, Vice officers arrested a 46-year-old man, a 24-year-old woman and a 20-year-old woman. Officers later released the women pending further investigation. The man was charged with methamphetamine trafficking, promoting a detrimental drug, two counts of promoting a dangerous drug, two counts of possessing drug paraphernalia and four firearms offenses. His bail was set at \$36,750.

▶In March 2013, Area I Vice officers initiated a search warrant at a home in the Palm

Tree subdivision. Vice Officers recovered 28.5 grams of crystal methamphetamine and 73 marijuana plants ranging from 6-inches to 4-foot tall. Two persons were arrested for this offense.

▶In April 2013, Area I Vice Officers served a search warrant on a home on 34th Avenue in the Orchidland subdivision. The whole house was being used for this “grow operation,” with each room serving as different growth stages of the operation. Vice personnel recovered, 424 marijuana plants with root systems attached in various stages of growth cycle, ranging from 6-inch seedlings to 5-foot-tall fully-budded ready-to-harvest plants. Also recovered were 924.5 grams of dried, processed marijuana.

▶In April 2013, the Area II Vice Section—with the assistance of the FBI, the Area I Vice Section, Kona Patrol Officers, the Area II Juvenile Aid Section, the Criminal Intelligence Unit and cellblock personnel—executed a cockfighting search warrant on a parcel of land in the Pāhala area. There, officers observed approximately 75 vehicles and more than 200 people in attendance. Officers recovered 15 dead and/or injured fighting chickens, paraphernalia associated with cockfighting activities, a .22 caliber Ruger revolver, a Suzuki QuadRunner all-terrain vehicle and \$6,790 in cash. Officers arrested a 60-year old man for cruelty to animals, first-degree promoting gambling, possession of gambling records, place to keep a firearm and alteration of ID marks prohibited. Upon conferral with prosecutors, the individual was released pending further investigation, and the cases will be deferred to their office upon completion.

▶In June 2013, the Area I Airport Task Force, while screening incoming parcel

boxes at the UPS sorting warehouse in Hilo, recovered a package headed to an address in Mountain View. A search warrant was initiated on the box and 1,017 grams (2.2 pounds) of crystal methamphetamine were

recovered. A control delivery of the package to the Mountain View address was initiated with the assistance of DEA personnel. One man was arrested and transported to the Federal Detention Center on Oahu.

Crime Lab

Supervisor: Criminalist III Kathy Pung

The Crime Lab consists of a lab supervisor/criminalist III, two criminalists II and two evidence specialists II who were reallocated in June 2013.

The Crime Lab completed 1,583 cases assigned in this fiscal year, compared with 1,488 in Fiscal Year 2011–2012, 1,394 in Fiscal Year 2010–2011 and 1,085 in Fiscal Year 2009–2010. Crime Lab cases consisted of 799 drug analyses, 721 latent print developments, 37 firearms related cases and 26 requests for processing biological evidence. Crime Lab personnel conducted 27 in-service training sessions for personnel in Area I Operations and 27 in-service training sessions for personnel in Area II Operations with a total of 475 personnel receiving Crime Lab related forensic services training.

The evidence specialists completed 158 of the 721 latent print development requests and assisted in 127 call-out incidents that included crime scenes, traffic fatalities, autopsies and specialized evidence processing.

Crime Lab personnel provided community service through public speaking engagements for the Onizuka Science Day Program, UHH Upward Bound Program and the Hawai'i Community College Administration of Justice program.

In Fiscal Year 2012–2013, the Crime Lab received a Coverdell Forensic Science Improvement grant of \$26,048 for training

and equipment. With the grant funds:

▶ Two criminalists will attend the Clandestine Laboratory Investigating Chemists Annual Technical Training to keep abreast of current designer drug legislation, analytical/technical concerns and emerging drug trends.

▶ Two evidence specialists and two Criminal Investigations Section detectives will attend a Basic Bloodstain Pattern Analysis course.

▶ The Area II Criminal Investigations Section will receive a 4-foot-by-6-foot trailer for storage of new crime scene equipment.

▶ Crime scene equipment for Area II Criminal Investigations includes:

- metal detector
- ballistics trajectory kit
- two crime scene processing tents
- weight & netting set for tent
- portable generator with outdoor lights and extension cord
- folding table with four chairs
- long-handled bolt cutter
- portable printer with inverter
- six voice recorders
- four headlamps for processing scenes at night
- flash kit for camera
- four orange filter safety glasses for ALS processing

▶ Crime scene processing equipment for evidence specialists includes:

- Canon EOS 60D digital SLR camera with lenses
- two camera flash kits
- digital video recorder with accessories
- post mortem fingerprinting kit

- glue fuming wand kit for latent print development/processing

- impulse heat sealer for evidence packaging
- long handle bolt cutter
- crime scene work lights
- folding crime scene cart
- portable lockable storage containers

Area I Patrol Districts

Hāmākua District

Commander: Capt. Richard Miyamoto / Capt. Andrew Burian
Area: 223 square miles / Authorized sworn positions: 18

At the end of the 2012–2013 fiscal year, the district saw a change of command with the retirement of Captain Richard Miyamoto from the Hāmākua/North Hilo Districts in June 2013. He was replaced by Captain Andrew Burian, who transferred from the Kaʻū District.

The Hāmākua District ended the 2012–2013 fiscal year with a decrease in burglaries, having 20 reported cases compared with 23 from the previous fiscal year. Seven of the burglaries were solved for a clearance rate of about 35 percent. Ninety-seven thefts were reported, compared with 77 from the previous year, an increase of about 20 percent. Of the 97 reported theft cases, 49 were solved for a clearance rate of more than 50 percent.

In August 2012, an off-duty Hāmākua District officer observed a reckless driver along Highway 19 near Kukaiau. When he reported this information, he learned that the vehicle had been stolen early that morning in South Kohala. Though the suspect fled from officers, police were able to locate the vehicle and—with the assistance of the public—arrest and charge the suspect a short time later.

Traffic enforcement remains a priority in the Hāmākua District. Major traffic collisions decreased, with 45 major accidents reported this year compared with 64 in 2011–2012. Police officers issued more than 3,000 citations. Of those, 1,343 were for speeding and 145 were for seat belt or child restraint violations. Emphasis on traffic enforcement remains an important factor in holding down the number of major traffic accidents. Despite the decrease in major traffic accidents, three traffic fatalities were recorded for the year.

Through the year, the Hāmākua District's Community Policing officer and school resource officer continued to work together with neighborhood watch organizations, schools and other community organizations to address various community concerns. Some of the major community events in which they were involved included:

- ▶ The Annual Western Week parade and block party
- ▶ Honokaʻa Peace Day Fair
- ▶ American Cancer Society Relay for Life
- ▶ Honokaʻa High School Homecoming Celebration

The North Hilo District at Kaʻala Gulch and the South Kohala District at Lakeland form the boundaries of the Hāmākua District. Its police station is located at 45-3400 Māmane Street in Honokaʻa Town.

North Hilo District

Commander: Capt. Richard Miyamoto / Capt. Andrew Burian
Area: 144 square miles / Authorized sworn positions: 13

In Fiscal Year 2012–2013, the North Hilo District had an increase in reported burglaries, with 10 burglary reports being filed compared with six the year before. Of the 10 burglary investigations, four were solved for a clearance rate of 40 percent.

Theft cases also increased from 29 to 31 cases. Officers were able to solve seven of the theft cases for a clearance rate of more than 20 percent.

The district logged 36 major traffic accidents, one more than the previous year. It also logged one traffic fatality. As in other districts, traffic enforcement is an important part of police work in North Hilo, as it helps keep our roads safe for our community members and visitors. Police officers issued more than

1,100 citations in the North Hilo District. Of those, 543 were for speeding.

During this fiscal year Officer Edmundo Palacol was honored as “Officer of the Year” for the North Hilo and Hāmākua Districts. With more than 29 years of service, Officer Palacol continues to demonstrate the core values of our department each and every day.

The North Hilo Community Policing officer often partners with the Hāmākua District’s Community Policing officer and school resource officer to better serve the community. In the North Hilo District they assisted with the Drug Free Bash with the Queen Lili‘uokalani Children’s Center, Big Island Biker Fest at Laupāhoehoe Point and Laupāhoehoe Music Festival.

The Hāmākua District at Ka‘ala Gulch and the South Hilo District at Hakalau Gulch form the boundaries of the North Hilo District. Its police station is located at 36-2285 Pu‘u‘alaea Homestead Road in Laupāhoehoe just west of the 25-mile marker off Old Māmalahoa Highway.

South Hilo Patrol

Commander: Capt. Robert Wagner/Capt. Richard Sherlock
Area: 635 square miles/Authorized sworn positions: 88

South Hilo Patrol, the Police Department’s largest staffed patrol division, is situated on the ground floor of Building B at the Public Safety Complex, 349 Kapiolani Street. Patrol officers also operate out of the Mo‘oheau Bus Terminal mini-station.

South Hilo Patrol provides 24-hour police services for the district of South Hilo and operates the East Hawai‘i Detention Center, which houses pretrial detainees for

the four police districts that comprise Area I Operations.

Other services provided by the South Hilo Patrol Division include Community Policing, school resource officers and the reserve police officer program.

During Fiscal Year 2012–2013, South Hilo Patrol served 3,606 court documents, including bench warrants, penal summons, subpoenas and restraining orders.

Officers responded to 444 major traffic

accidents in South Hilo this fiscal year compared with 441 the previous fiscal year. In the area of traffic enforcement, police made 444 DUI arrests and issued 1,572 speeding citations and 756 seat belt citations. Overall, officers issued 13,474 traffic citations.

South Hilo communities experienced an increase in robberies and thefts. Thirty-four robberies were reported this fiscal year compared with 28 reported last year, an increase of 18 percent. Thefts rose from 2,195 last fiscal year to 2,328 this year.

Burglaries stayed fairly constant totaling 370 compared with 367 last year. A Special Enforcement Unit consisting of South Hilo Patrol officers was assembled to track these property crime trends and identify persons of interest in a proactive effort to combat these crimes.

Police initiated 80 reported sexual assault cases compared with 81 the previous fiscal year. Assaults decreased 9 percent from 434

to 386. Police investigated five murder cases in South Hilo this fiscal year compared with none last fiscal year.

The ever present danger to Hawai'i Police Department officers patrolling our streets was never more evident as on the evening of January 2, 2013, when two South Hilo Patrol Officers—a 4-year veteran and a 14-year veteran—were ambushed while responding to calls about possible shots fired at a Kino'ole Street address in Hilo.

Both officers were struck with gunfire to their lower extremities and immediately transported by Hawai'i Fire Department personnel to Hilo Medical Center.

The assailant, a 31-year-old Hilo man who was hiding under a van and fled the scene on foot, was arrested the next day after a united effort by the Hawai'i Police Department concluded with his arrest at a home in Hilo where he was hiding.

The two officers injured in the line of duty that day have since returned to work.

The South Hilo District occupies the area between the North Hilo District at Hakalau Gulch and the Puna District at Pāpa'i. Its police station is located at 349 Kapi'olani Street.

Puna District

Commander: Capt. Samuel Jelsma

Area: 683 square miles / Authorized sworn positions: 59

The district of Puna is larger in land mass than the entire island of Oahu or the cities of Dallas and San Francisco combined.

Forty-nine police officers, four sergeants, one lieutenant and one captain are assigned to the Puna District.

The main Puna district station is located just outside Pāhoa Village. The Kea'au sub-station is located in Kea'au town off Old Volcano Road.

Community Policing officers in Puna partner with 10 Neighborhood Watch groups in crime prevention, community awareness and problem solving. The Community Policing officers worked with local businesses and farmers to establish the Kea'au Agriculture Watch in response to agricultural thefts and illegal hunting in the Kea'au area. Some of the largest landowners and farm groups in the area are part of the watch.

Improving the quality of life is a police

and community priority in Pāhoa town. The Community Policing and Patrol officers conduct crime reduction details and bicycle patrols to increase police presence in town.

On January 8, 2013, two visitors to our island became stranded near the lava viewing area in Kalapana. The victims, a 70-year-old man and 66-year-old woman, became disoriented after hiking out to view lava entering the ocean. The victims called for help from their cellular telephone, and police and fire responded to the scene. As night fell the tourists were told to stay put and fire rescue would head back at first light. Officers Luke Watkins and Murray Toledo were still at the scene after Fire Department personnel left, and they could see the lost hikers' flashlights in the distance. Both officers headed out on a several-hour hike and successfully rescued the missing hikers. The victims in this case credited the officers with saving their lives.

Because of their actions, Officers Toledo and Watkins were the subject of a news article, were honored as Aloha Exchange

Club "Officers of the Month," and received commendations from both the mayor and the police chief for their outstanding work in this incident.

Also this fiscal year, Officer Shea Nactor was honored by his peers and supervisors as "Puna Patrol Officer of the Year" for his outstanding enforcement efforts and work ethic.

Overall, criminal cases initiated in the Puna District decreased with 5,901 cases initiated in Fiscal Year 2012–2013, compared with 6,461 the previous year. This represents a decrease of 560 cases or nearly 9 percent. For the fiscal year, burglaries decreased by 3 percent (363 compared with 373 the previous year), financial crimes decreased by 18 percent (137 compared with 166 the previous year) and thefts were up slightly (806 compared with 793 the previous year). The Puna District's burglary clearance rate was down slightly (27.5 percent cleared compared with 28 percent for the same period the previous fiscal year).

The Puna District is situated between the South Hilo District at Pāpa'i and the Ka'ū District at Keauhou Landing. Its police station is located in Pāhoa at 15-2615 Kea'au-Pāhoa Road.

Area II Patrol Districts

North Kohala District

*Commander: Capt. Albert Jason Cortez
Area: 123 square miles/authorized sworn positions: 16*

During Fiscal Year 2012–2013, the North Kohala District experienced a slight increase in the number of reported burglaries (17 cases compared with 15 cases last fiscal year). Reported assaults were down (20 cases compared with 30 cases the previous fiscal year), and thefts were down (83 cases compared with 87 cases the previous fiscal year).

A Police-community meeting was held at the Kohala Intergenerational Center, where members of the community voiced their concerns to the police chief and his command staff.

In response to community concerns about speeding in the district, North Kohala Patrol officers issued 636 speeding citations this fiscal year (compared with 439 the previous fiscal year). Most noteworthy

was a motorist who was cited for driving 117 miles per hour on Akoni Pule Highway.

The number of traffic accidents increased slightly (from 71 to 74) with three resulting in fatalities.

The “Kohala Project Grad Night,” in its fourth year, was again a huge success with almost 100 percent participation. Community Policing participated, in partnership with many organizations, toward its continued success.

The North Kohala Community Policing officer participated with the community in annual events, including the Kamehameha Day Parade, Skate Day, Easter Egg Hunt and Toys for Tots. In partnership with Kohala Elementary School, the DARE curriculum was taught to 70 students.

The North Kohala District is bounded by South Kohala at Kai'ōpae and Hāmākua at Honopue. Its police station is located behind the Kamehameha statue in Kapa'au at 54-3900 Akoni Pule Highway.

South Kohala District

*Commander: Captain Aimee Wana
Area: 688 square miles/Authorized sworn positions: 33*

During Fiscal Year 2012–2013, the district saw a decrease in some major crime activity. Police did not receive any reports of murder or robbery incidents, compared with one manslaughter and two robbery cases the previous fiscal year. Assaults increased slightly to 49 this year from 46 the previous year.

Officers also recorded a slight increase in property crimes. Stolen vehicle cases were up to 25 incidents compared with 14 the previous fiscal year. Criminal property damage cases were up to 110 compared with 80 the previous fiscal year. Shoplifting incidents were up to 55 incidents compared with 44 the previous fiscal year. Car break-ins decreased

to 63 compared with 77 the previous fiscal year, making Fiscal Year 2012–2013 the second consecutive year of decreases.

Financial crimes decreased to 49 cases compared with 97 the previous fiscal year. Theft incidents decreased to 236 cases compared with 266 the previous fiscal year. Burglaries increased to 54 incidents compared with 40 the previous year. This increase is attributed to a crime spree in the Waikoloa area for which a suspect was apprehended. Patrol officers cleared 30 percent of the reported financial crime investigations, 52 percent of the theft incidents and 49 percent of the burglary incidents.

Drug-related cases increased to 81 incidents compared with 53 the previous fiscal year.

South Kohala patrol officers issued 5,800 traffic citations and arrested 82 impaired drivers.

Officers also investigated 132 major

traffic accidents and 341 minor traffic accidents. Roadway construction and improvements continued on Route 200/Saddle Road and Route 190 near the 12- to 14-mile markers, and the new road was expected to open in late 2013. Police investigated one traffic fatality that occurred in the Mauna Lani area.

Community Policing officers hosted or participated in a number of events in the Waikoloa, Kawaihae/Puakō and Waimea areas, including outreach programs, Keiki ID for various groups, and annual celebrations. They also participated in community-sponsored events such as community health fairs and employer sponsored safety fairs. In addition, Community Policing officers participated in the planning and implementation of the Waimea Christmas Parade, Waimea Paniolo Parade and the Kings Shops Independence Day celebrations.

The South Kohala District covers the area between the North Kohala District at Kiowa and the Kona District at Kaula Point. Its police station is located at 67-5185 Kamāmalu Street in Waimea.

Kona Patrol

Commander: Capt. Richard Sherlock

Area: 834 square miles / Authorized sworn positions: 83

The Kealahou police station serves as the main station for the Kona Patrol Division and houses a cellblock detention section, Community Policing section, Clerical Services section and an evidence section. The Kona Patrol division has two sub-stations. One is located at Hale Halawai in downtown Kailua-Kona and the other is in Captain Cook.

During Fiscal Year 2012–2013, Kona Patrol clerks processed 4,650 Firearms registrations, including handguns, rifles and shotguns. Of these registered firearms, 2,430

were imported from outside the state.

The evidence section, which is staffed by two evidence custodians, is responsible for the storage and preservation of more than 90,000 pieces of evidence recovered in criminal investigations. The preservation of these pieces of evidence is critical to the successful prosecution of criminal cases.

Kona Patrol planned to welcome 10 new police officers who would graduate from the police recruit program in July 2013. However 11 officers were to leave due to transfers or promotions.

Kona Patrol officers responded to more than 8,496 criminal complaints and more than 16,582 calls for service related to non-criminal complaints such as minor nuisances or persons needing assistance.

They also issued 20,175 citations, of which 2,445 were for speeding violations. In a department-wide effort to combat distracted driving, Kona Patrol officers issued 1,339 citations for using a cell phone while driving. In addition, 538 drivers were arrested for suspicion of driving while under the influence of alcohol or drugs.

The Kona District received 4,189 court documents, of which 2,448 were served.

The Kona Community Policing Unit is headed by a police sergeant and consists of two school resource officers and six Community Policing officers.

The school resource officers are assigned to Konawaena Middle School and Kealakehe Intermediate School. In addition to teaching DARE classes, they provide students with information on anti-bullying, Internet safety, laws and ordinances, and a variety of other topics. The school resource officers establish a rapport with the students so they will perceive police officers as more approachable. They also provide a liaison between the school and the police department.

The Community Policing officers focus on addressing community-related issues in the North and South Kona areas.

Their responsibilities also include bike patrol in the Ali'i Drive area and beach sweeps to ensure the safety of the tourist community and businesses and to address the growing

number of transient homeless persons attracted to the warm climate. Their problem-solving efforts include spearheading Neighborhood Watches and crime reduction details.

The Kona Patrol Special Enforcement Unit (SEU) consists of officers from Patrol and Community Policing. They focus on crime analysis and identification of persons of interest directly related to crime trends in the Kona area, from car break-ins at Ho'okena Beach Park to burglaries in the Hōlualoa area. This task-force-style unit also works closely with the Area II Vice Section and Criminal Investigations Section.

During Fiscal Year 2012–2013, until discontinued in January 2013, SEU initiated more than 150 investigations, resulting in 100 felony charges and 50 felony arrests.

In December 2012, Detective Bradley Freitas, who supervised SEU, and his unit assisted in a collaborative task force along with Hilo SEU and Sheriff's personnel to capture two escaped convicts from Hawai'i Community Correctional Center. They located one individual two days after the escape and the other was located eight days after the escape.

One of the escapees had been involved in a ring of auto thieves and burglars who were responsible for a rash of crimes in Kona. The Kona SEU had assisted in a joint task force with Kona Vice Section personnel to successfully identify members of the crime ring and arrest them for a variety of crimes that had occurred in Kona and had expanded island-wide. With the responsible parties captured, the crime level in Kona dropped drastically.

The Kona district occupies the area between the South Kohala District at Waikoloa and the Ka'ū District at Kaulanamauna. Its main police station is in Kealakehe at 74-611 Hale Maka'i Place.

Ka'ū District

Commander: Captain Andrew Burian

Area: 700 square miles / Authorized sworn position: 19

During Fiscal Year 2012–2013, Ka'ū Patrol officers investigated 53 major traffic accidents, a decrease from 77 investigated in Fiscal Year 2011–2012. A total of 2,304 citations were issued. Of those 530 were for speeding and 136 were for seat belt or child restraint violations.

Ka'ū Patrol Officers investigated more than 1,170 incidents in the Ka'ū District. Officers investigated 62 burglaries, a decrease from 76 cases initiated from the previous fiscal year. Theft and unauthorized entry into motor vehicles cases remained nearly the same, as 197 cases were reported compared with 199 from the previous fiscal year. Community Policing officers continue to work with Neighborhood Watch groups in Discovery Harbor and Hawaiian Ocean View Estates to maintain community support.

The most significant events occurring during the Fiscal Year 2012–2013 were:

▶ On September 17, 2012, with assistance from Area II Vice section, Ka'ū Patrol officers executed a search warrant at a home in the Hawaiian Ocean View Estates subdivision, leading to the recovery of 198 marijuana plants that were being cultivated in an indoor-growing operation. Also

recovered were 2.5 pounds of dried marijuana, a firearm with ammunition, growing lights, growing pots and growing medium. One woman and one man were arrested and charged with first-degree commercial promotion of marijuana and related drug and firearms offenses.

▶ On October 25, 2012, Ka'ū Patrol officers assisted state sheriffs with the eviction of two men and a woman after a state court ruling determined that they were illegally occupying the land at Kāwā Bay. The woman did not cooperate and was arrested and charged with criminal trespass and resisting arrest.

▶ On January 23, 2013, officers responded to a report of a head-on collision on Route 11 near the 55-mile marker involving a sedan and a pickup truck. Upon arrival, the pickup truck was engulfed in flames with both occupants still inside. Investigation revealed that the car traveling south crossed the center line and collided with the truck traveling north. Both occupants of the pickup truck, a 56-year-old woman and a 65-year-old man, died at the scene. Two occupants of the car, a 79-year-old man and 40-year-old man, also died at the scene. A 9-year-old boy, who had been in the car, died later at the hospital.

The Ka'ū District is bounded by the Kona District at Kaulanamaua and the Puna District at Keauhou Landing. Its police station is located at 95-5353 Māmalahoa Highway in Nā'ālehu.

Traffic Enforcement Unit (TEU)

Commander: Sgt. Christopher Gali

The Traffic Enforcement Unit (TEU) is charged with investigating traffic crashes involving death or serious injury while conducting traffic enforcement and training related to traffic enforcement and investigation. It is staffed by a sergeant and seven police officers.

In Fiscal Year 2012–2013, TEU investigated 35 fatal crashes that killed 42 people. Twenty-two of those fatal crashes involved alcohol, drugs or both. Alcohol alone was a factor in four of the fatal crashes, drugs alone were a factor in 10 and a combination of drugs and alcohol was a factor in eight. (In the previous fiscal year, 25 people died in 24 crashes. That year, 22 of the crashes involved alcohol, drugs or both.)

TEU officers conducted 83 DUI sobriety checkpoints, arrested 209 drivers who were under the influence of intoxicants and conducted 72 seat belt checkpoints.

The officers also issued 5,484 moving citations, of which 2,510 were for speeding. They issued 3,360 regulator citations and made 242 other arrests.

On November 8, 2012, members of the Hawai'i Police Department received indi-

Fatal Traffic Crashes	
Alcohol related	4
Drug related	10
Drugs and alcohol	8
Not impaired	13
Total	35

vidual awards from Mothers Against Drunk Driving during a luncheon ceremony at the YWCA in Hilo. The Top Cop award went to South Hilo Patrol Officer Erhard Autrata for having 99 DUI arrests.

Other officers honored were:

- ▶ South Hilo Patrol Officer Christopher Kapua-Allison, 52 DUI arrests.
- ▶ South Hilo Patrol Officer Gabriel Wilson, 40 DUI arrests.
- ▶ Traffic Enforcement Unit (Area I) Officer Clarence Davies, 62 DUI arrests.
- ▶ Traffic Enforcement Unit (Area II) Officer Joshua Lewis, 92 DUI arrests.
- ▶ Kona Patrol Officer Shea Nactor, 37 DUI arrests.

Grants

The following grants were funded by state or federal agencies during Fiscal Year 2012–2013:

‘Click It or Ticket’ Basketball

To reduce fatalities and injuries to occupants aged 17 and under during motor vehicle collisions. This was accomplished by improving awareness of state laws to increase the seat belt usage rate of youths and teens ages 4–17.

DATA Grant

To establish a statewide traffic data system and ensure compliance with national standards.

Hawai‘i Impact

To combat the methamphetamine (“ice”) drug problem in the County of Hawai‘i by conducting various “sting” operations.

Hawai‘i Narcotics Task Force

To assist with the interdiction of drugs within the County of Hawai‘i via the apprehension/arrest/conviction of individuals smuggling narcotics into, out of and within the County of Hawai‘i.

Roadblock Grant

To reduce the number of alcohol-related fatalities and injuries, increase public awareness and provide a constant deterrence against impaired driving.

Seat Belt Enforcement Grant

To reduce fatalities and injuries to front-seat occupants and rear-seat occupants aged 17 and under by increasing the usage rate of seat belts.

Speed Enforcement Grant

To reduce the number of motor vehicle collisions resulting in injuries and fatalities caused by speeding drivers.

Traffic Investigations

To reduce the number of alcohol-related fatalities and injuries, increase public awareness and provide a constant deterrence against drunk driving.

Aggressive Driving

To reduce fatalities and injuries, increase public awareness and provide a constant deterrence against aggressive driving.

SAFE Standby

To improve Hawai'i County's response to violent sex crimes, physical abuse and crimes of violence against women.

Specialized Investigative Training

To improve the Police Department's ability to respond to violent crimes against women through ongoing specialized training.

Cellphone/PDA

To improve the Police Department's ability to respond to crimes against women perpetrated through wireless/electronic communication devices.

Enforcement of Protective Orders

To improve Hawai'i County's ability to ensure prompt service of all protective orders.

Sexual Assault/DNA Analysis

To improve Hawai'i County's ability to respond to sexual assaults and other violent crimes against adult and adolescent females with timely examinations by SAFE examiners and analysis of recovered evidence specimen.

Distracted Driving

To reduce the number of drivers using an electronic mobile device while operating a motor vehicle.

Basic Needs to Improve Forensic Services in Hawai'i County

To improve and enhance the quality of Hawai'i County forensic services.

Working Towards Crime Lab Accreditation

To provide Crime Lab Accreditation training, equipment and services to increase the overall efficiency and safety of forensic services.

Sexual Assault Forensic Examiner

To improve Hawai'i County's response to violent crimes against women.

Pu Malu

To improve safety by enhancing the quality of the department's investigation of crimes involving firearms and reducing the number of firearms in the community.

Youth Deterrence

To reduce the number of underage individuals operating a vehicle after consuming alcohol and illegally drinking in public areas.

COPS

To provide additional support to the Police Department and various communities to assist in the prevention of crimes. This shall be accomplished by providing Neighborhood Watch programs, Business Watch programs, home security inspections and by working with the schools on programs such as anti-bullying campaigns.

Budget

The following are the budget figures for Fiscal Year 2012–2013:

Personnel Services

Salaries and wages, straight time	\$ 32,560,601
Salaries and wages, other	\$ 3,696,510

Other current expenses

Contractual services	\$ 8,017,733
Materials and supplies	\$ 2,456,835
Other charges	\$ 137,275
Equipment	\$ 326,305
Miscellaneous accounts	\$ 676,387
Grants funded	\$ 2,332,834
Total	\$ 50,204,480

Personnel Changes

New Hires

Darren J. A. Abalos, Police Officer I TEMP	Rose Ann A. Granadosin, Account Clerk
Ivan L. K. Alatan, Police Officer I TEMP	Travis Harris, Custodian/Groundskeeper I
Brian B. Beckwith, Police Officer I TEMP	Brian A. Hunt, Police Officer I TEMP
Matthew D. Bennett, Police Officer I	Christopher R. Jelsma, Police Officer I TEMP
Ronald S. Borowski, Police Officer I	
Sidra K. N. Brown, Police Officer I	Tyler V. Jelsma, Police Officer I TEMP
Jody D. Buddemeyer, Police Officer II	Michelle L. Kualii, Clerk III
Joyce E. Cabango, Accountant I	Michael F. Lucas-Medeiros, Police Officer II
Justin L. Cabanting, Police Officer I TEMP	Jesse D. Martin, Police Officer I TEMP
Aaron J. Caceres, Radio Technician I	Whitman K. C. McCallum, Police Officer II
Dustin S. Chaves, Police Officer I TEMP	Robert L. McKay Jr., Police Officer I TEMP
Thomas M. A. Chun-Ming, Police Officer II	
Ingrid P. Dean, Polygraph Examiner	Jose A. Miguel, School Crossing Guard
Joel J. Furuto, Police Officer I TEMP	Mario A. Ochoa, Police Officer I TEMP

Promotions

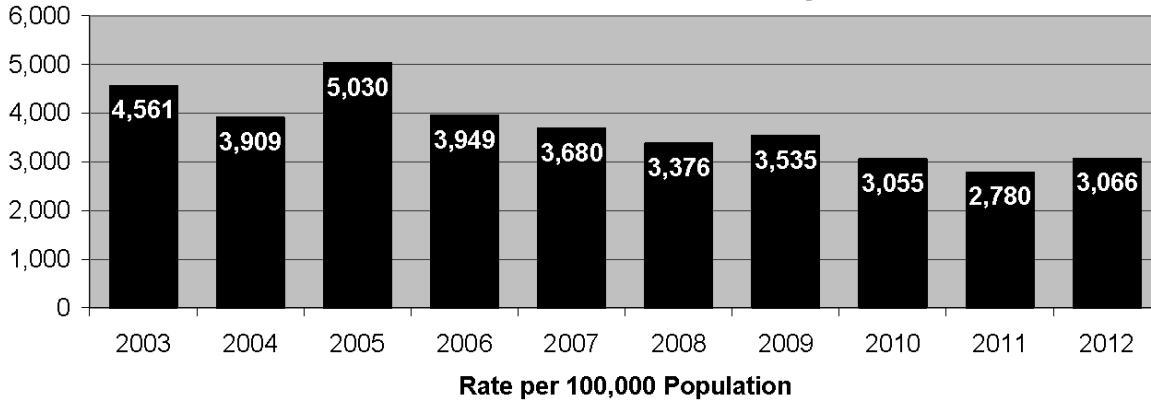
Scott P. Amaral, Detective	Randal M. Ishii, Captain
Edwin A. Buyten, Detective	Mitchell K. Kanehailua Jr., Major
Fetuutuunai F. Amuimuia, Detective	Jesse J. Kerr, Detective
Kenneth Bugado Jr., Captain	Joshua K. I. Lewis, Detective
Aaron M. Carvalho, Sergeant	Todd C. Pataray, Detective
Chris G. Correia, Sergeant	Daylynn S. B. Kyles, Operations Clerk
Calvin D. Delaries Jr., Sergeant	Kenneth A. K. Quiocho, Lieutenant
William H. Derr, Sergeant	Burt T. Shimabukuro, Captain
Mark K. Farias, Lieutenant	Jo Ann L. Tallett, Clerical Services Supervisor II
Vernon C. Ferreira, Detective	Shawn W. Tingle, Detective
Sandor J. Finkey, Detective	Roylen L. Valera, Detective

Retirements

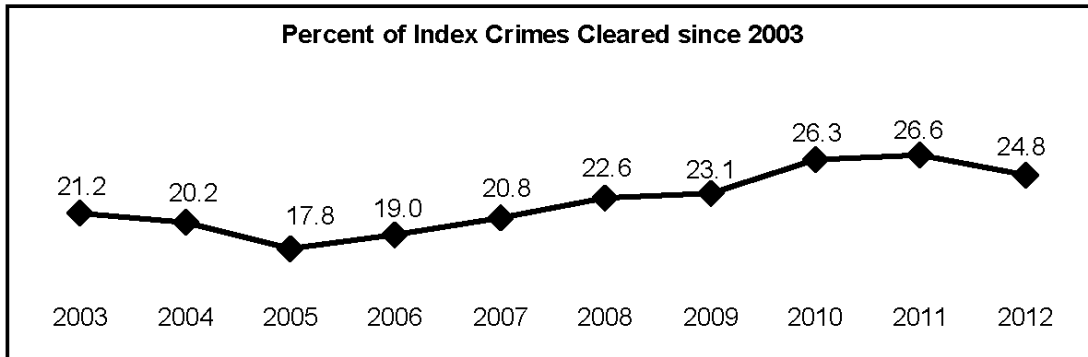
Detective John H. Ancheta	Captain Richard A. Miyamoto
Detective Myra H. Iwamoto	Sergeant Prentiss A. Moreno
Captain Samuel H. Kawamoto Jr.	Sergeant Jason Y. Shinoda
Police Dispatcher II Roydon M. Kobayashi	Major Larry R. Weber
Clerical Services Supervisor II JoAnne K. Lee	



Total Index Crime Rate, Hawaii County, 2003-2012



Percent of Index Crimes Cleared since 2003



Index Crimes - Murder, forcible rape, robbery, aggravated assault, burglary, larceny-theft, motor vehicle theft, and arson. However, due to a different method of counting, arson is not included in the totals of reported Index Offenses and Index & Part II Offenses.

From 2011 to 2012:

- Reported Index Crimes increased 10.3% in rate.

Comparing 2012 to 2003:

- The Index Crime rate declined 32.8%.

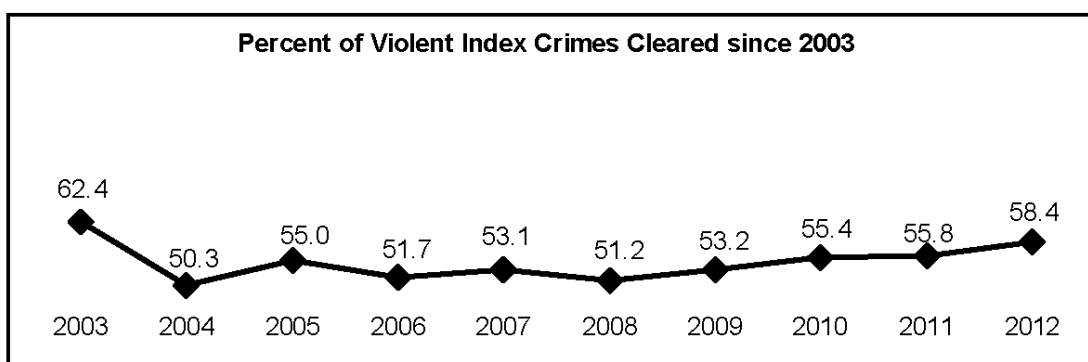
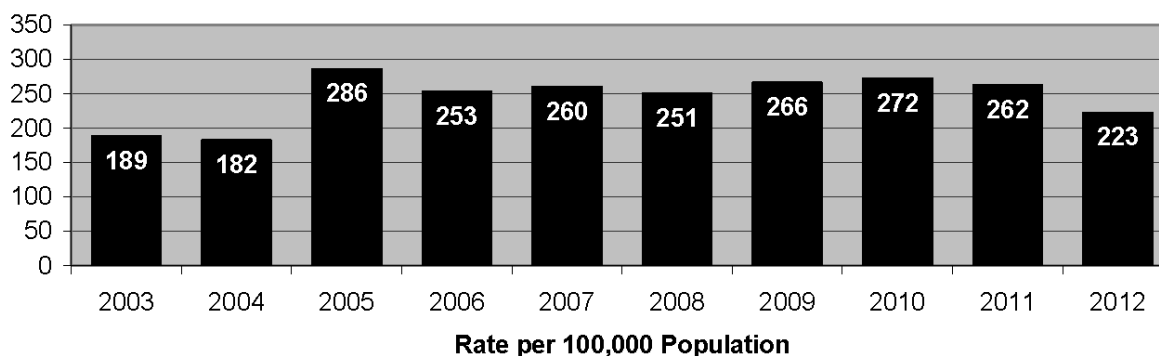
In 2012, of the 5,799 Index Offenses reported:

- Property crimes accounted for 92.7% (5,378).
- Violent crimes accounted for 7.3% (421).

Hawaii County's total Index Crime rate in 2012 was the lowest in the State of Hawaii.

Source—Crime Prevention and Justice Assistance Division (2013). *Crime in Hawai'i, 2012: A Review of Uniform Crime Reports*. State of Hawai'i: Department of the Attorney General.

Violent Crime Rate, Hawaii County, 2003-2012



Violent Crimes - Murder, forcible rape, robbery, and aggravated assault.

From 2011 to 2012:

- The rate of reported violent crimes decreased 15.2%.

Comparing 2012 to 2003:

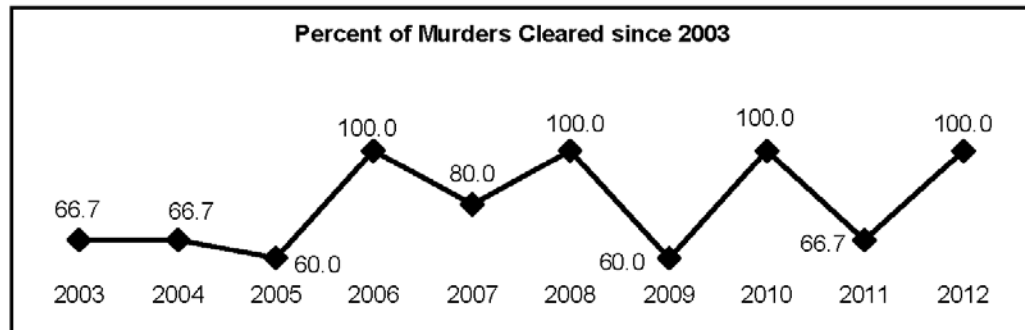
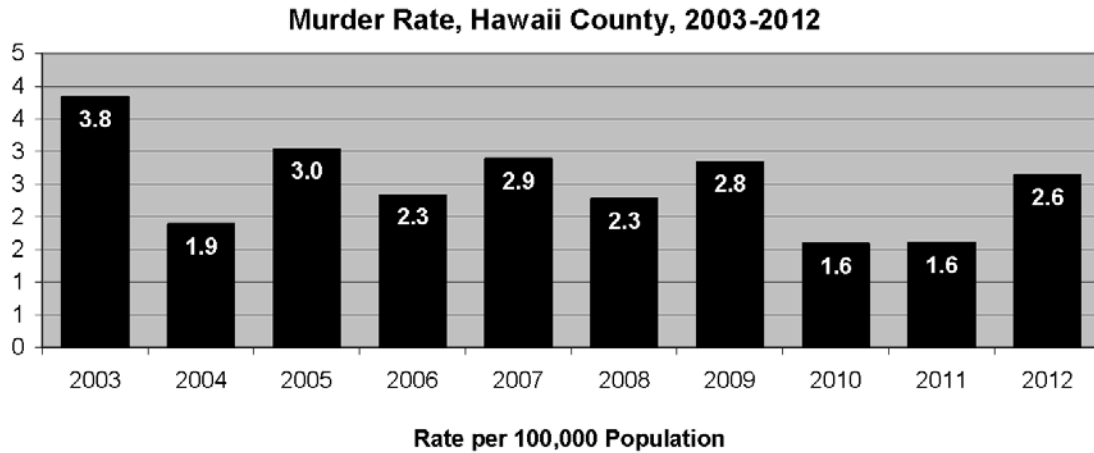
- The violent crime rate increased 18.0%.

In 2012, of 421 violent crimes reported:

- Aggravated assault accounted for 71.5% (301).
- Robbery accounted for 17.6% (74).
- Forcible rape accounted for 9.7% (41).
- Murder accounted for 1.2% (5).

Hawaii County's violent crime rate in 2012 was the lowest in the State of Hawaii.

Source—Crime Prevention and Justice Assistance Division (2013). *Crime in Hawai'i, 2012: A Review of Uniform Crime Reports*. State of Hawai'i: Department of the Attorney General.



Murder - The willful killing of one human being by another.

From 2011 to 2012:

- The rate of reported murders increased 64.8%, with 5 murders reported in 2012, versus 3 murders reported in 2011.

Comparing 2012 to 2003:

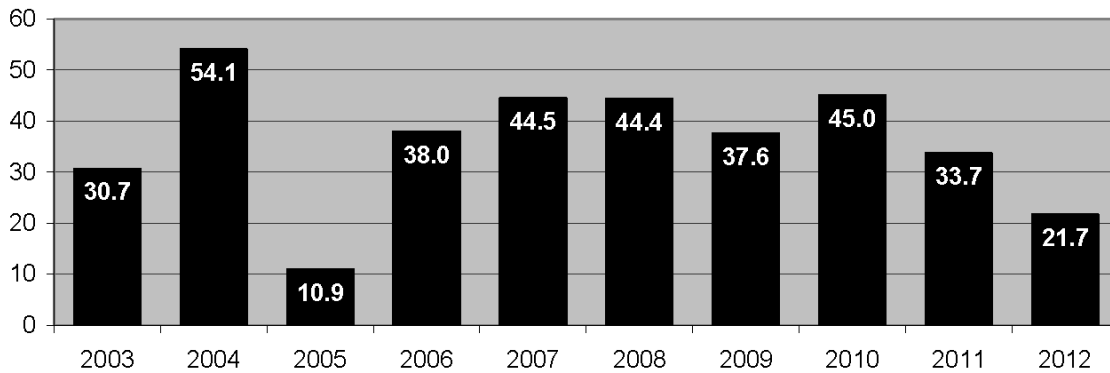
- The murder rate decreased 31.1%.

In 2012, of the 5 murders reported:

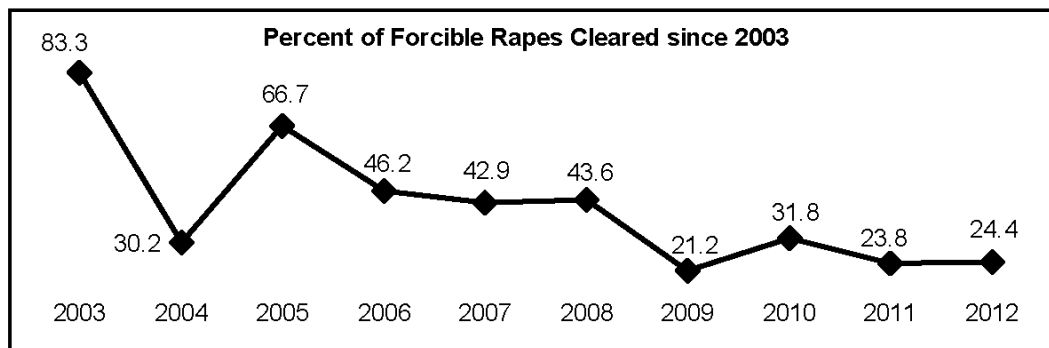
- Firearms were involved in 40.0% (2).
- Knives or cutting instruments were involved in 40.0% (2).
- Other/unknown weapons were involved in 20.0% (1).

Source—Crime Prevention and Justice Assistance Division (2013). *Crime in Hawai'i, 2012: A Review of Uniform Crime Reports*. State of Hawai'i: Department of the Attorney General.

Forcible Rape Rate, Hawaii County, 2003-2012



Rate per 100,000 Population



Forcible Rape - The carnal knowledge of a female forcibly and against her will. Assaults or attempts to commit rape by force or threat of force are included.

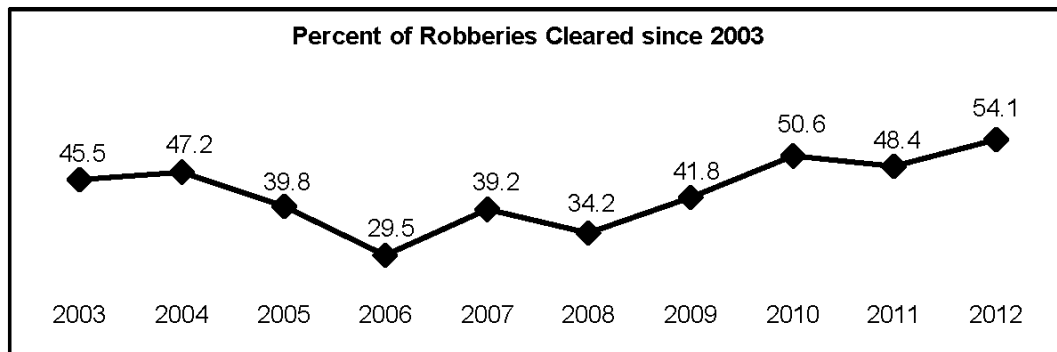
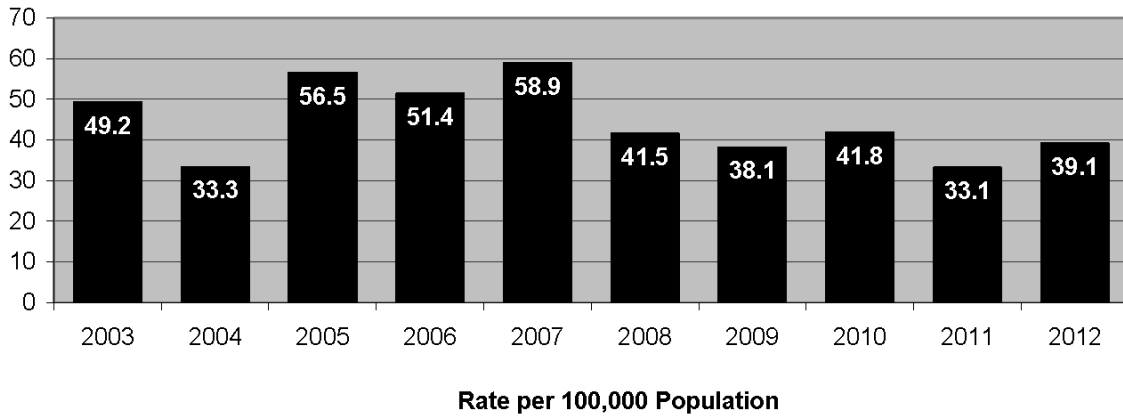
From 2011 to 2012:

- Reported forcible rapes decreased 35.6% in rate.

Comparing 2012 to 2003:

- The forcible rape rate decreased 29.4%.

Robbery Rate, Hawaii County, 2003-2012



Robbery - The taking or attempting to take anything of value from the care, custody, or control of a person or persons by force or threat of force or violence and/or by putting the victim in fear.

From 2011 to 2012:

- Reported robberies increased 18.1% in rate.

Comparing 2012 to 2003:

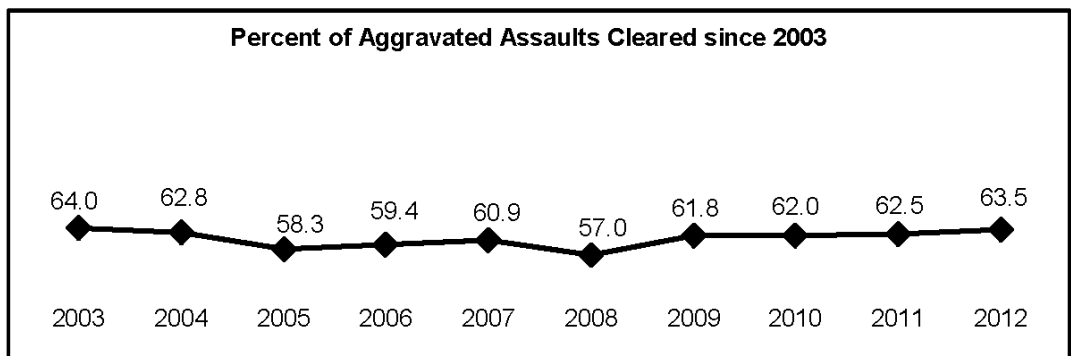
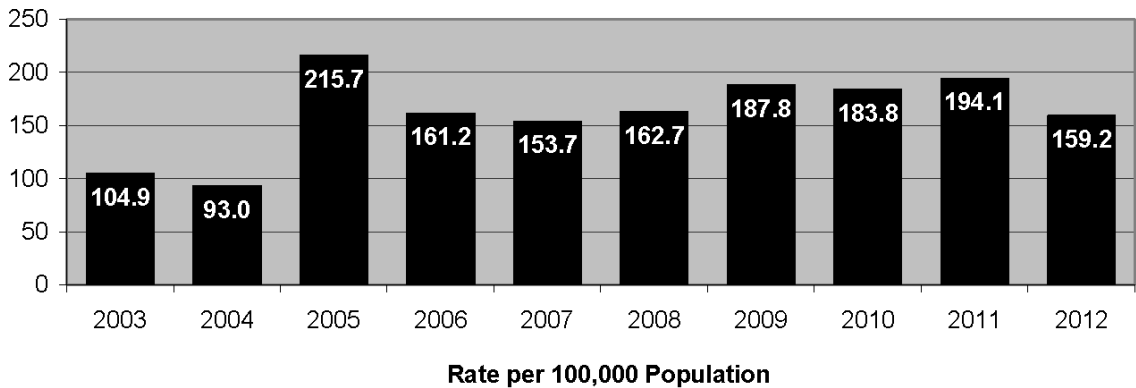
- The robbery rate decreased 20.5%.

In 2012, of the 74 robberies reported:

- Strongarm weapons (hands, fists, feet, etc.) accounted for 70.3% (52).
- Other dangerous weapons were involved in 12.2% (9).
- Firearms were involved in 9.5% (7).
- Knives or cutting instruments were involved in 8.1% (6).

Source—Crime Prevention and Justice Assistance Division (2013). *Crime in Hawai'i, 2012: A Review of Uniform Crime Reports*. State of Hawai'i: Department of the Attorney General.

Aggravated Assault Rate, Hawaii County, 2003-2012



Aggravated Assault - The unlawful attack or attempted attack by one person upon another for the purpose of inflicting severe or aggravated bodily injury. This type of assault is usually accompanied by the use of a weapon or by means likely to produce death or great bodily harm.

From 2011 to 2012:

- Reported aggravated assaults decreased 18.0% in rate.

Comparing 2012 to 2003:

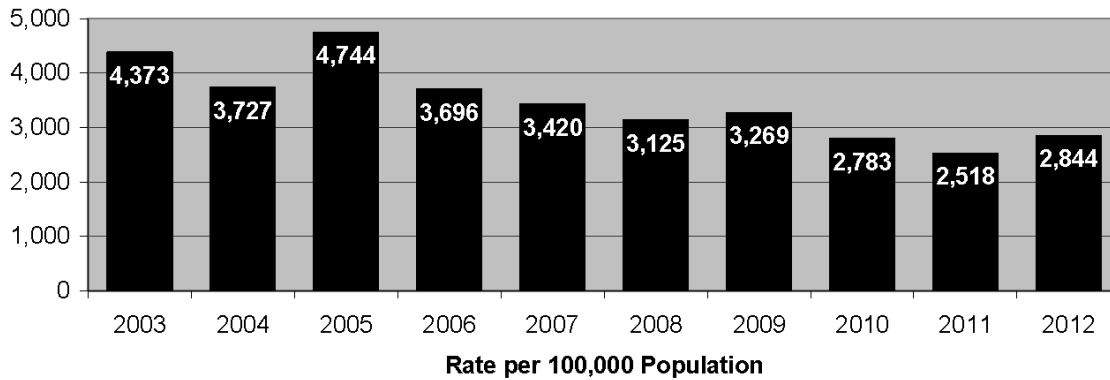
- The aggravated assault rate increased 51.8%.

In 2012, of the 301 reported aggravated assaults:

- Strongarm weapons (hands, fists, feet, etc.) accounted for 44.5% (134).
- Other dangerous weapons were involved in 31.2% (94).
- Knives or other cutting instruments were involved in 17.3% (52).
- Firearms were involved in 7.0% (21).

Source—Crime Prevention and Justice Assistance Division (2013). *Crime in Hawai'i, 2012: A Review of Uniform Crime Reports*. State of Hawai'i: Department of the Attorney General.

Property Crime Rate, Hawaii County, 2003-2012



Property Crimes - Burglary, larceny-theft, and motor vehicle theft. Arson is also a property crime; however, due to a different method of counting, it is not included in the totals of property crimes, Index Crimes, and total Index & Part II Offenses.

From 2011 to 2012:

- Reported property crimes increased 12.9% in rate.

Comparing 2012 to 2003:

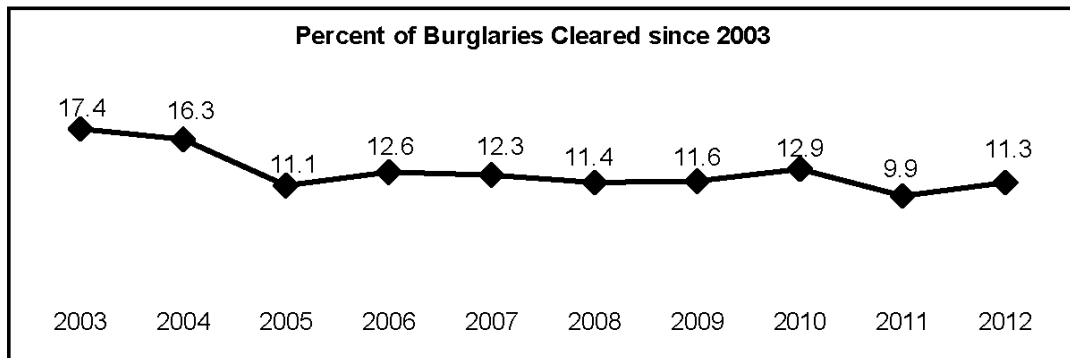
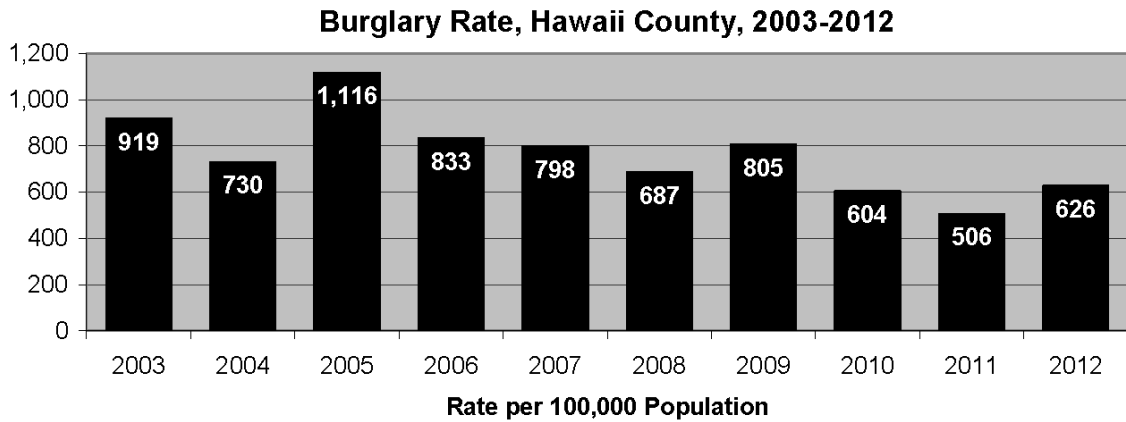
- The property crime rate decreased 35.0%.

In 2012, of the 5,378 property crimes reported:

- Larceny-theft accounted for 69.7% (3,751).
- Burglary accounted for 22.0% (1,184).
- Motor vehicle theft accounted for 8.2% (443).

Hawaii County's property crime rate in 2012 was the lowest in the State of Hawaii.

Source—Crime Prevention and Justice Assistance Division (2013). *Crime in Hawai'i, 2012: A Review of Uniform Crime Reports*. State of Hawai'i: Department of the Attorney General.



Burglary - The unlawful entry of a structure to commit a felony or a theft. Attempted burglary is included.

From 2011 to 2012:

- Reported burglaries increased 23.8% in rate.

Comparing 2012 to 2003:

- The burglary rate decreased 31.9%.

In 2012, of the 1,184 burglaries and attempted burglaries reported:

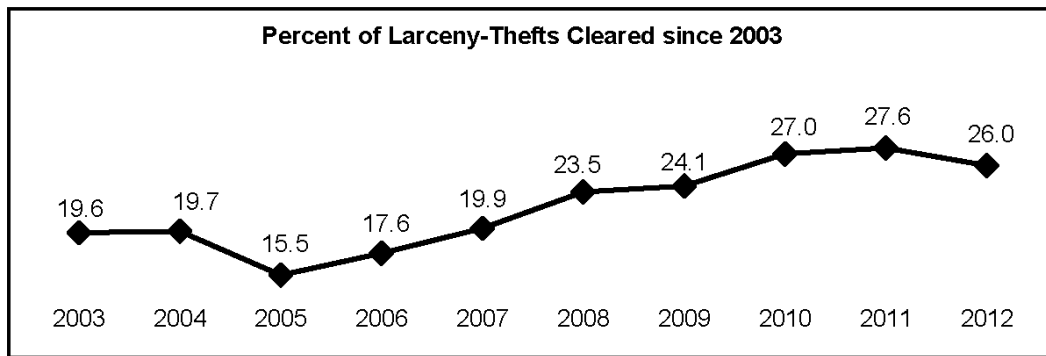
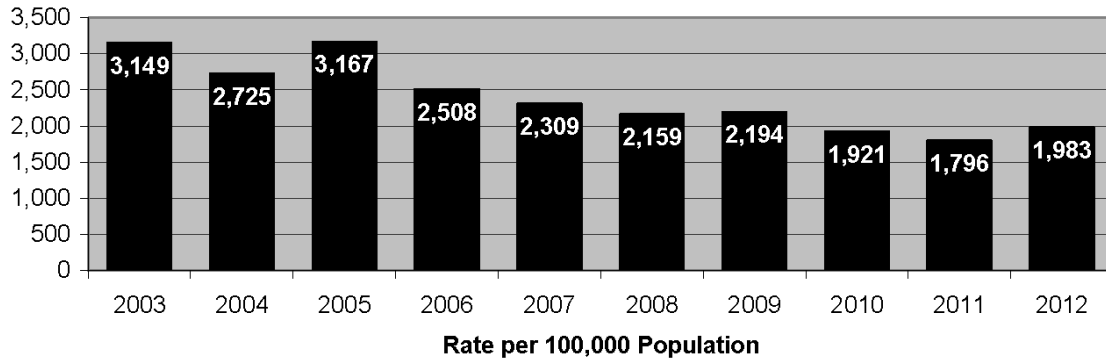
- Burglary accounted for 95.8% (1,134).
- Attempted burglary accounted for 4.2% (50).

In 2012, of the 1,134 burglaries that were reported:

- Structures entered by force accounted for 62.0% (703).
- Structures entered without force accounted for 38.0% (431).

Source—Crime Prevention and Justice Assistance Division (2013). *Crime in Hawai'i, 2012: A Review of Uniform Crime Reports*. State of Hawai'i: Department of the Attorney General.

Larceny-Theft Rate, Hawaii County, 2003-2012



Larceny-theft - The unlawful taking, carrying, leading, or riding away of property from the possession or constructive possession of another.

From 2011 to 2012:

- Reported larceny-thefts increased 10.4% in rate.

Comparing 2012 to 2003:

- The larceny-theft rate decreased 37.0%.

Hawaii County's larceny-theft rate in 2012 was the lowest in the State of Hawaii.

Source—Crime Prevention and Justice Assistance Division (2013). *Crime in Hawai'i, 2012: A Review of Uniform Crime Reports*. State of Hawai'i: Department of the Attorney General.

